

# Westport Fire Department High Winds on South Coast will knock down power lines, trees

**"HIGH WIND WATCH IN EFFECT FROM WEDNESDAY AFTERNOON THROUGH LATE WEDNESDAY NIGHT:**

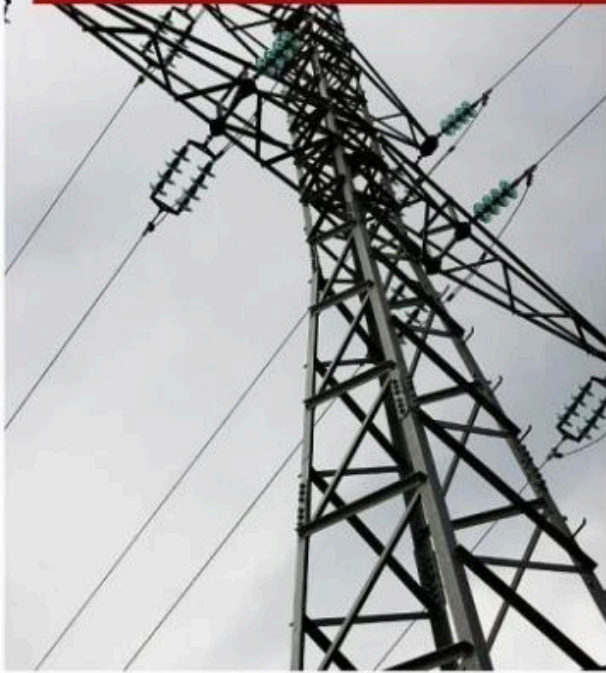
\* **WHAT...**East winds 25 to 35 mph with gusts up to 60 mph possible.

\* **WHERE...**In Massachusetts, Dukes MA, Nantucket MA, Southern Bristol MA, and Southern Plymouth MA Counties. In Rhode Island, Block Island RI, and Newport RI and Washington RI Counties.

\* **WHEN...**From Wednesday afternoon through late Wednesday night.

\* **IMPACTS...**Damaging winds could blow down trees and power lines. Widespread power outages are possible. Travel could be difficult, especially for high profile vehicles. **PRECAUTIONARY/PREPAREDNESS ACTIONS...**Monitor the latest forecasts and warnings for updates."-Westport Fire Department.

# Downed Power Lines



STAY AWAY AND  
DON'T TOUCH  
THEM.

ASSUME ALL  
DOWNED POWER  
LINES ARE LIVE.

## CALL 911

To check on power outages  
please go to the Massachusetts  
Power Outages map on the  
Westport Fire Department  
website ([www.westportfire.org](http://www.westportfire.org))



*Westport Fire Department photo.*

# Generator Safety



- Never use a generator in an attached garage, even with the door open.
- Generators should be used in well ventilated locations outside at least 5 feet (1.5 metres) away from all doors, windows, and vent openings. Measure the 5-foot (1.5 metres) distance from the generator exhaust system to the building.
- Turn off generators and let them cool down before refueling. Never refuel a generator while it is hot.

Information courtesy of NFPA



*Westport Fire Department photo.*

# Generator Safety

- Store fuel for the generator in a container that is intended for that purpose and is correctly labeled as such. Store the containers outside of living areas.
- Place generators so that exhaust fumes can't enter the home through windows, doors, or other openings in the building. The exhaust must be directed away from the building.
- Make sure to install carbon monoxide (CO) alarms in your home. Follow manufacturer's instructions for correct placement and mounting height.

Information courtesy of NFPA



*Westport Fire Department photo.*