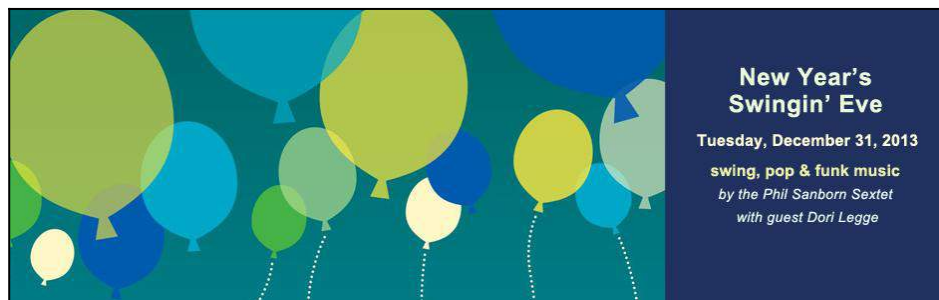


New Year's Swingin' Eve: music, dancing, food, and children's entertainment!



New Year's Swingin' Eve, a family and friends affair, Dec. 31

Guests of all ages are invited to ring in 2014 at the New Bedford Whaling Museum for a festive evening of music, dancing, fantastic food, and children's entertainment on Tuesday, December 31, 7:00 p.m. to 10:00 p.m.

The Phil Sanborn Sextet with special guest Dori Legge will perform swing, pop & funk music. Refreshments include heavy hors d'oeuvres by Russell Morin Fine Catering and a cash bar. Co-hosted by the New Bedford Symphony, activities will include kids' karaoke, Balloon Brigade, and fabulous raffle. Festive attire is encouraged.



*Phil Sanborn
Sextet with
special guest Dori
Legge*

Guests will view the city's fireworks display over the harbor at 8:30 p.m. from the Davis Observation Deck. After the fireworks kids can join the Balloon Brigade to shower the dance floor with balloons from the mezzanine of the Bourne Building during a mock "midnight" countdown at 9:00 p.m.

Sponsored by Demoulas Super Markets, Inc. (dba: Market Basket) and Russell Morin Fine Catering, New Year's Swingin' Eve is a collaborative fundraiser that supports the educational programs of the New Bedford Whaling Museum and New Bedford Symphony Orchestra. Tickets: \$50 for adults and \$15 for kids. Call (508) 997-0046 ext. 100 or visit whalingmuseum.org.

The New Bedford Whaling Museum is the world's most comprehensive museum devoted to the global story of whales, whaling and the cultural history of the region. The cornerstone of New Bedford Whaling National Historical Park, the Museum is located at 18 Johnny Cake Hill in the heart of the city's historic downtown. Winter hours, November through March: Tuesday to Saturday from 9:00 a.m. to 4:00 p.m.; Sunday 11:00 a.m. to 4:00 p.m.; open 9:00 a.m. to 4:00 p.m. on holiday Mondays. For more info: www.whalingmuseum.org.

