

The South Coast Hot Jobs List

– 25 September 2013

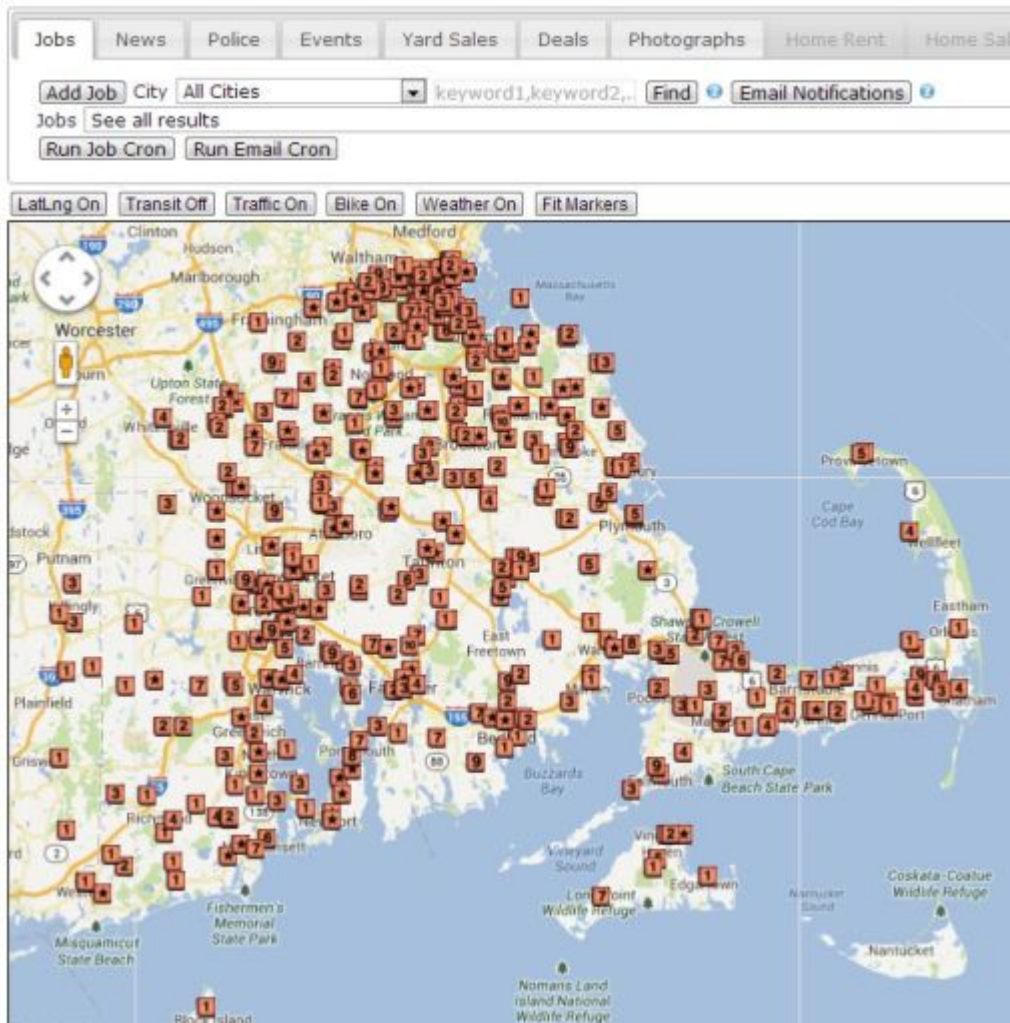


by
Michael
Silvia

The Greater New Bedford unemployment rate is much higher than the rest of Massachusetts, but believe it or not there really are a lot of jobs available for qualified applicants. Sometimes the barrier to a new job can be the lack of information on available job openings. To solve this, each week New Bedford Guide will be working with the New Directions Southcoast (also known as the Greater New Bedford Career Center) and pulling jobs from our **jobs database** to inform job seekers about the hottest jobs in the area. We will define “Hot Jobs” as those jobs that need to be filled by the employer immediately. For those looking to search some large job databases, checkout my **Best Job Search Resources for New Bedford Residents article**. Unless noted otherwise, those interested in these positions or want more information should go to the Greater New Bedford Career Center at 618 Acushnet Avenue. Be sure to also check out our Job Portal to find jobs by location on a map: http://www.newbedfordguide.com/map-page#pm_jobs_tab. Want to get e-mail notifications for new jobs? Checkout our **e-mail subscription service**.

If there is not a link to applying for one of the jobs listed, contact Sharon Martin, Business Services Representative at 508-990-4115 or feel free to stop by the Greater New Bedford Career Center. These positions are posted on

mass.gov/jobquest.



Here are the Hot Jobs from the Greater New Bedford Career Center as of September, 25th, 2013:

1. **Executive Sales #3050649** – Reputable and large seafood processing plant in New Bedford looking to hire an Executive Sales person. Applicant **MUST** have strong sales experience and be able to hit the ground running. Some knowledge of the seafood industry is helpful, but not required.
2. **Driver CDL Class A #3065258** – Class A driver with experience in asphalt and operating a triaxle dump truck needed ASAP. Must have good driving record and reliable. Veterans are encouraged to apply.
3. **Store Clerk – Part Time #3040996** – Responsibilities for this position include but are not limited to: Stocking

shelves, assisting customers and receiving products. Cashiering experience preferred. Must be able to lift up to 60 lbs. Monday – Friday work schedule.

4. Property Clerk II #3041008 – Requirements for this position include but are not limited to:

Ability to establish and maintain accurate records, Computer data entry skills, Ability to understand and follow policy and procedures.

The Property Clerk, acting under the Director of Property, is responsible for the storage, issuance, inventory and maintenance of institutional inmate clothing, bedding and linen and the inventory of proper storage of inmate personal property, jewelry and personal papers.

5. Textile Machine Operator #3045421 – IMMEDIATE HIRE -Textile Machine Operators needed for New Bedford Manufacturer – Dye House experience preferred but an experienced textile machine operator will also qualify for this position. Responsibilities include but are not limited to controlling and monitoring electronic equipment, loading and unloading dye machines, observing screen to verify data entry and compliance with procedures. This is a permanent position.

6. Assistant Service Coordinator #3050563 – The Service Assistant provides administrative support to the Service Supervisor, customer service to the company's service customers, and assists the Service Supervisor with the logistics of managing the field service personnel. Ability to apply common sense understanding to carry out instructions furnished in written, oral or diagram form. Computer proficient. Knowledge of: Microsoft Office Word, Excel and internet research.

7. Screen Printer #2756624 – Looking for at least a minimum of two to four years of manual screen printing experience. Must be competent and dependable. Prefer someone who is familiar

with all aspects such as reclaiming, burning and printing.

8. K-9 Officer #3065293 – Responsibilities include, but are not limited to the overall care and custody of trained canine. Assist correction officers as requested. Assist investigation and searches as requested. Perform other duties as assigned by the Sheriff. Those who are not currently employed by the Bristol County Sheriff's Office and are interested in this position must submit an employment application to the Human Resources Division on or before Monday, October 7, 2013 at 4:00 p.m. Applications can be found on our website at www.bcs0-ma.us.

9. Daycare Bus Driver #3065307 – Transport young children to and from daycare centers. Must be able to relate to young children and possess a positive attitude. CDL – School bus & passenger endorsement. Split shift 5:45-9:15 am, 2:00-5:45 pm.

10. Bilingual Generic Support Service #3065473 – the GSSC is responsible for coordinating support services as part of the Senior Care Options Primary Care Team. The GSSC's basic function is to assist eligible elderly persons to obtain services which will enhance their quality of life and allow them to live as independently as possible with dignity and respect. B.A. from an accredited college or university, preferably in social services or relevant experience. Licensed Social Worker or 2 year professional experience with elders over 60 with at least one year in a setting where elders receive health care services (such as a hospital, nursing facility, community health agency or interdisciplinary program with an ASAP).

Here are some jobs in the New Bedford area from the **NewBedfordGuide.com** jobs database:

1. ESL Teacher – Part Time – Global Learning Charter Public School. Full details and application process [here](#).

2. Registered Nurse – SE Massachusetts Health and

Rehabilitation Center. Full details and application process **here.**

3. Branch Manager – Webster Bank. Full details and application process **here.**

4. Part-time Afterschool Coordinator – Alma del Mar Charter School. Full details and application process **here.**

5. Best Buy Sales Consultant – Computing and Tablets Job. Full details and application process **here.**

Be sure to also check out our Job Portal to find jobs by location on a map: http://www.newbedfordguide.com/map-page#pm_jobs_tab. Want to get e-mail notifications for new jobs? Checkout our **e-mail subscription service.**