

The AHEAD Holiday Store Opens to Shoppers Nov 20th in New Bedford

The AHEAD Holiday Store is opening on Friday, November 20th at 9am!

Open to the public with **new store hours** this year. Don't miss this great opportunity to stock up on a wide variety of golf related apparel and accessory items. They are offering extended weekday hours to accommodate social distancing. This has become one of the most anticipated shopping events in the greater New Bedford area. See below for details.

****Important****

Masks will be required to enter the store.

Massachusetts retail capacity limits will be followed.

Due to COVID-19 restrictions, there will be NO blow out sale in Mid-December.

All items are offered at a substantial discount from retail prices and make great holiday gifts for the golf enthusiast in your life. Customers can expect great pricing from day one! You'll find first-quality overruns, some irregulars and thousands of items to choose from. New items are added every single day.

2020 Store Hours

November 20th – 28th Hours

Fridays and Saturdays from 9am-2pm

December 2nd-19th Hours

Wednesday through Friday 11am-6pm

Saturdays from 9am-2pm

Hours of Operation

November 2020

Date	Time
Friday 11/20/2020	9am-2pm
Saturday 11/21/2020	9am-2pm
Friday 11/27/2020	9am-2pm
Saturday 11/28/2020	9am-2pm

December 2020

Date	Time
Wednesday 12/2/2020	11am-6pm
Thursday 12/3/2020	11am-6pm
Friday 12/4/2020	11am-6pm
Saturday 12/5/2020	9am-2pm
Wednesday 12/9/2020	11am-6pm
Thursday 12/10/2020	11am-6pm
Friday 12/11/2020	11am-6pm
Saturday 12/12/2020	9am-2pm
Wednesday 12/16/2020	11am-6pm
Thursday 12/17/2020	11am-6pm
Friday 12/18/2020	11am-6pm
Saturday 12/19/2020	9am-2pm

Directions

RT. 140 – EXIT 7 – NEW BEDFORD INDUSTRIAL PARK

270 SAMUEL BARNET BLVD., NEW BEDFORD, MA.

DRIVE TO THE END OF BARNET BLVD AND ENTER THE SECOND “AHEAD”
DRIVE WAY

DRIVE TO THE BACK OF THE BUILDING TO THE DOOR LABELED STORE
ENTRANCE.

PLEASE NO PHONE CALLS • CASH OR CREDIT CARD



LifeStream Seeking Caregivers for Shared Living Program

With so many people forced to change their livelihood due to remote learning, the need to work from home or having to leave their jobs, LifeStream has a wonderful opportunity for those willing to open their homes and become part of a supportive team while making a difference in someone's life – all from the comfort of their own homes!

LifeStream is seeking compassionate and caring people to share their home to someone in need and become a caregiver for an adult with developmental disabilities. Caregivers provide support, companionship and guidance to an individual living in the caregiver's home. In exchange, caregivers receive comprehensive resources and access to excellent support (24 hours a day/7 days a week if needed) including hands-on 1:1 training from an assigned Registered Nurse and case manager. In addition, caregivers receive a generous tax-free daily stipend as well as room and board.

Caregivers must be 18 years of age, have a valid driver's license, use of a personal vehicle, an acceptable CORI, pass a national fingerprint background check and a negative drug screen.

"The Shared Living program is a great opportunity for people working from home and those who may have left the workforce and are in need of additional income," said Lori Kydd, LifeStream's Vice President, Operations. "We currently support many people in homes throughout the greater Fall River and New Bedford area. Our caregivers have opened their homes and their hearts to assist people in living a fulfilled life."

To learn more about the **Shared Living program** and to apply as a caregiver, please contact Heather Dextradeur at Hdextradeur@lifestreaminc.com

Five Reasons to Get Your Hearing Checked

If you find yourself asking folks to repeat things or your missing parts of conversations it might be time to get your hearing checked. We spoke recently with **Dr. Rena Jacobsen** a Doctor of Audiology right here in the Southcoast. Here are (5) reasons or warning signs that a hearing test might be in order.

You can hear people talking but you miss some words almost all the time.

You hear ringing, roaring or buzzing in your ears, even when the room is quiet.

Your family and friends complain your TV is too loud, but you like it just fine.

You put your cell phone on speaker to hear better.

You avoid some social situations that you used to enjoy, because you're tired of asking people to repeat themselves.

Can you remember the last time you had your hearing checked? Most adults haven't had a hearing screening since grade school (only 14% of physicians routinely screen for hearing loss during a physical). Want to schedule one? Click here: <https://www.ascentaudiologydartmouth.com/appointment/>

Most people lose their hearing very gradually over time. Less than 10% of these hearing losses can be medically or surgically corrected. Yet, it's also a fact that with new advancements in digital hearing aid technology, 95% of these hearing losses can be managed effectively with hearing aids. Because nearly one-fifth of all Americans 12 years or older have a hearing loss severe enough that it can make communication difficult, we take your hearing very seriously.

If you're interested in taking an online hearing test its pretty straight-forward. The test takes about 5 minutes:
<https://www.ascentaudiologydartmouth.com/hearing/hearing-test-online/>



Ascent Audiology & Hearing
(774) 762-5358
341 State Rd, Dartmouth, MA 02747

Monday: 9:00 AM – 5:00 PM
Tuesday: 9:00 AM – 5:00 PM
Wednesday: 9:00 AM – 5:00 PM
Thursday: 9:00 AM – 5:00 PM
Friday: 9:00 AM – 5:00 PM
Saturday: Closed
Sunday: Closed

College Edge Helps Southcoast

Families Through the College Admissions Process

Like everything else in 2020, the college admissions process has been disrupted, but there is a silver lining: it has given students and families an opportunity to slow things down and really consider what a great college match is. Kerry Lynch and Leanne Soulard, owners of **College Edge** in Dartmouth, believe that this can be a good thing. Kerry, a career educator who spent five years as principal at Dartmouth High School explains, "In any other year, families would have followed the usual template of scheduling tours, attending information sessions, and categorizing schools based on the highlights shared by admissions counselors and tour guides. Now there are more options for taking a deeper dive and finding hidden gems." *Interested in speaking to the team? **Click HERE.***

College Edge has opened enrollment for members of the class of 2022 and invites students and their families to use the College Edge Method and experience the college search not as a job to be done but, instead, a rite of passage to be enjoyed. It's a time for students to explore their personal, social, and academic values and match them with schools that support their particular talents and skills. Leanne has spent over 15 years helping students access great colleges and game-changing scholarships and always emphasizes overall fit, "A great college match is about more than a school's location and prestige. Students who work with College Edge are encouraged to deeply examine a school's academic environment and offerings, characteristics of the student body, and uncommon student life opportunities."

The inability to physically visit campuses at the present time gives students the freedom to get to know schools through the new formats being offered by admissions offices such as real-time chats with students and customized tours for artists or

athletes. They can explore schools that might normally be out of their geographic comfort zones, and Kerry and Leanne know from experience that this is when many students find the hidden gems they didn't even know they were looking for. *Working with College Edge will give families access to tips from admissions offices, vetted test prep companies, targeted course advising and application support from start to finish.*



Registration for their comprehensive counseling **programs** is open for the Class of 2022. If you've worked with College Edge before, you'll find some small changes and additions to these programs but the commitment to positive outcomes remains the same. They've actually reduced the cost of their premier **Partnered Path to College Program** to reflect the current economic situation in the world and are offering an **additional \$100 discount to the first ten families who register with the code PARTNER2022.**

Fingers crossed, the Class of 2022 will be able to visit campuses next spring. Between now and then, there is a lot of

exploring to be done and College Edge is ready to help students create a college plan that puts them on their unique path to a successful and positive experience. Questions? You can email them directly: hello@colledgeedgeprogram.com or give them a call at 774-305-4268. At College Edge you have a team that has years of experience and a proven track record of achievement.

College Edge

338-B Elm Street

South Dartmouth, MA

774-305-4268

Email: hello@colledgeedgeprogram.com

Website: colledgeedgeprogram.com/



Considering Going Solar in 2020?

As the dog days of summer force us to crank up the AC, the dread of next month's electric bill looms large. Why pay for electricity when you can create your own with solar panels for home use? With all the current tax rebates and financing incentives, you can reduce or even eliminate your electric bill for immediate savings, simply by putting your home to work for you.

Have questions? Here are some of the common ones that get asked by homeowners in New England.

- Is solar for home use worth it?
- Will solar panels work for my home?
- Should I lease or buy the solar panels?
- How long will it take for solar panels to pay for themselves?
- How long does it take to install the solar panels?
- How long does it take to install the solar panels?
- How do I schedule a free solar estimate?

If you're looking for a local company that can help answer these questions then consider **Isaksen Solar**, based in Fall River. **You can get a free, no obligation quote right HERE.**

Isaksen Solar is considered to be one of the best solar companies in New England. They take pride in our having some of the happiest customers and in our being known for outstanding service and custom designs for every customer's needs. Check out their reviews: <https://isaksensolar.com/reviews/>

Isaksen Solar was founded in 2017 by two former Tesla employees who, after years of operating in a big business environment, realized that their customers could have a much

better experience if they went solar through a smaller, local company who specialized in the region (Rhode Island and South-Eastern Mass).

One of the biggest problems was the complexity of projects and the logjams/inefficiencies of big business. Isaksen' does things differently and simplified the entire process so that projects happen quickly and easily.

Every town is different, and each utility has unique requirements. Isaksen' prides themselves in their local relationships and flexibility in getting projects done in a timely manner. And they are committed to continuing to provide the service and products that have granted them the reputation as one of the best solar companies you can experience. Isaksen offers worry-free Installations with a 25 year warranty on materials, performance, and labor. Isaksen Solar is a locally owned business with roots in the community. Their headquarters are in Fall River, MA and they use high-quality materials, made right here in the USA.

Isaksen Solar

18 Pocasset Street

Fall River, MA 02721

Phone: 508-567-0647

Website: isaksensolar.com/

Zeiterion Performing Arts Center Announces Drive-In With Concerts and Movies This Summer, STARTING JUNE 18th.

The Zeiterion Performing Arts Center is thrilled to offer the Zeiterion Drive-In featuring concerts and movies beginning Thursday, June 18. The drive-in, which will be located in the Seastreak Ferry "Whale's Tooth" Parking Lot, will feature a line-up of live musical acts and newer theatrical releases, as programming inside the theater is paused due to the pandemic. Tickets will be sold per vehicle, \$25 for movies and \$50 for concerts, available in advance of the event at <https://zeiterion.org/drivein/>.

"At the Zeiterion, we know how important it is to gather together, so we were determined to find a way to safely come together to sing, laugh and smile," said Rosemary Gill, Executive Director, Zeiterion. "We are so excited to bring a drive-in to New Bedford. I have to thank Mayor Mitchell and the City of New Bedford, Seastreak and the New Bedford Port Authority who were integral in making this happen."

To ensure safety, the Zeiterion has implemented policies for all attendees, including the use of a face covering while outside the vehicle. Vehicles will be directed to every other space, so attendees may sit or stand in the empty space while maintaining social distancing. Restrooms will be available, and they will be monitored for safety, but congregating anywhere on the premises is not permitted. The complete list of information and policies is available on <https://zeiterion.org/drivein/>.

The Zeiterion Drive-In currently includes three movies and

five concerts, with the potential for more events to be added at a later date. The line-up is:

Morrissey Boulevard

Thursday, June 18, 7:00 p.m.

Tickets: \$50 per car

Four New Bedford siblings have created one fun band! Morrissey Boulevard brings an infectious enthusiasm to a wide range of styles and periods from Johnny Cash, Janis Joplin and Jimmy Hendrix to Harry Styles and Lizzo and everything in between. They've played to rave reviews around the Southcoast and as far flung as New Orleans and Mexico! Join us at the Drive-In kick-off for a mix of pop, rock, and originals.

The Hipshot Band

Saturday, June 20, 7:00 p.m.

Tickets: \$50 per car

Get ready for The Hipshot Band, one of THE premier bands in New England, delivering a diverse repertoire of classic R&B, Disco, Soul, Rock, Jazz, Country, Reggae, Swing, 80's favorites, Motown and Top 40 hits. The group of well-seasoned and talented musicians provide high-energy and nonstop entertainment for every crowd. The Hipshot Band is real music, played and performed by some of the best musicians around!

Yesterday

Monday, June 22, 8:30 p.m.

Tickets: \$25 per car

A must-see for Beatles fans! Jack Malik was just another struggling songwriter... but that was yesterday. After a mysterious blackout, Jack (Himesh Patel) discovers he is the only person on earth who remembers The Beatles! As he rockets to fame by passing off the Fab Four's songs as his own, Jack risks losing Ellie (Lily James) – the one person who has loved him and believed in him from the start. Before the door to his old life closes forever, Jack must decide if all he needs is

love, after all. Kate McKinnon and Ed Sheeran also star in this romantic rock 'n' roll comedy from Academy Award-winning director Danny Boyle and Academy Award-nominated screenwriter Richard Curtis.

Harriet

Tuesday, June 23, 8:30 p.m.

Tickets: \$25 per car

Presented in association with the New Bedford Historical Society

Based on the thrilling and inspirational life of an iconic American freedom fighter, Harriet tells the extraordinary tale of Harriet Tubman's escape from slavery and transformation into one of America's greatest heroes. Haunted by memories of those she left behind, Harriet (Cynthia Erivo) ventures back into dangerous territory on a mission to lead others to freedom. With allies like abolitionist William Still (Leslie Odom, Jr.) and the entrepreneurial Marie Buchanon (Janelle Monáe), Harriet risks capture and death to guide hundreds to safety as one of the most prominent conductors of the Underground Railroad. Witness the story of a woman who defied impossible odds to change the course of her life and the fate of the nation.

Sonic the Hedgehog

Wednesday, June 24, 8:30 p.m.

Tickets: \$25 per car

The world needed a hero, we got a hedgehog. Powered with incredible speed, Sonic The Hedgehog (voiced by Ben Schwartz), aka The Blue Blur, embraces his new home on Earth. That is, until he accidentally knocks out the power grid and sparks the attention of super-uncool evil genius Dr. Robotnik (Jim Carrey). Now it's super-villain vs. super-sonic to save the planet in this live-action adventure comedy that's fun for the whole family.

Pearly Baker Acoustic

Thursday, June 25, 7:00 p.m.

Tickets: \$50 per car

The Pearly Baker Band has been playing Grateful Dead music (as well as Beatles, Stones, Dylan, originals, etc.) for a solid 35 years. Their acoustic set at The Z's Drive-In will be a sweet homecoming for the band who originated out of New Bedford. Pearly Baker includes Tim Richmond on bass, Mike Mahoney on guitar and vocals, Ken Richards on guitar and vocals, Eric Costa on keyboards, Geoff Fortin on drums, and Rob Coyne on Drums.

Ryan Montbleau

Friday, June 26, 7:00 p.m.

Tickets: \$50 per car

Ryan Montbleau's musical journey began as a solo artist in his native Massachusetts during the early 2000s, and since then he's gone on to collaborate as a performer and songwriter with Martin Sexton, Trombone Shorty, and Galactic among others, and share bills and stages with artists as diverse as Tedeschi Trucks Band, Ani DiFranco, The Wood Brothers, Rodrigo y Gabriela, and Mavis Staples. NPR's Mountain Stage compared his "eloquent, soulful songwriting" to Bill Withers and James Taylor, while Relix hailed his unique brand of "poetic Americana," and The Boston Herald raved that "he's made a career of confident, danceable positivity."

Adam Ezra Group

Wednesday, July 1, 7:00 p.m.

Tickets: \$50 per car

Talk to any Adam Ezra Group fan around the country and they'll tell you that each of their performances is a one-of-a-kind, community-driven experience, propelled by the spirit of the people in front of the stage. For both fans and band members

alike, an AEG concert is a rally to live life with intensity and soak in the moments we share with one another. Hailing from Boston, AEG's unconventional approach to the music world has allowed them to surge beyond their beloved hometown and emerge as one of the most uniquely powerful, underground live music experiences in the country. While Ezra has played with an array of musicians over the years, his current line-up featuring Corinna Smith on fiddle, Alex Martin on drums, and Poche Ponce on bass.

The Zeiterion Performing Arts Center is a 501(c)(3) non-profit organization with a mission to provide New Bedford and the region with performing arts programming of excellence that inspires, educates, engages and entertains. Tickets are available for purchase at www.zeiterion.org or by calling 508-994-2900. Temporary Zeiterion Box Office hours are 10:00 a.m. to 5:00 p.m., Monday to Friday.

CFC Fried Chicken Opens Their Third Location in New Bedford

If you've never tried CFC (Crown Fried Chicken) you're in for a treat! Light, crispy and perfectly seasoned its one of New Bedford's hidden gems. With locations in the south end (42 Rodney French Blvd) and at 1570 Acushnet Ave doing brisk business we received word that they were opening a new location at 340 Hathaway Blvd. right next to New Bedford High School.



It's wonderful to see family owned businesses thrive and expand in our city. Stop in this weekend to say hello! They are available for takeout, and delivery with UBER Eats at their other locations and very soon at the new location. Open 7 days a week, and open late (12am)

<https://cfcfriedchicken.net/>

340 Hathaway Blvd.

New Bedford, MA. 02740

774-305-4262

774-305-4373



**Rose Homes – LAER Realty
Partners is Expanding its**

Team in Greater New Bedford

Rose Homes – LAER Realty Partners is thrilled to welcome 2 new experienced agents to our growing team. Michele Rapoza and Steve Bouley come to us with deep roots in their community and bring our agent count to 22. Michele is a married mom of 4 from New Bedford who now resides in Dartmouth for the past 7 years. She got into real estate 12 years ago when buying her first home. Michele says, "It's the best decision she ever made!" An avid bike rider and a lifetime Fairhaven resident.

Steve is also married with adult children and 12 grand-kids. He's a retired special Ed teacher, has been actively involved in his community for numerous years, ex. light a light, PTA president, and a current Salvation Army volunteer and past volunteer of the year! With Michele's 12 years of experience and Steve's 40 years, our office's knowledge and expertise just continues to grow. Our commitment to excellence, world-class training, serving others and high investments in technology made their decision easy.

Steve Bouley can be contacted at 508-264-8211 or by Email sbouley@rosehomesrealestate.com Michele Rapoza can be reached at 508-536-8304.

With these expansions, Rose Homes/LAER Realty Partners continues to show that our state-of-the-art business model is changing the local real estate market. They know that next level thinking and implementation are key.

About Rose Homes/LAER Realty Partners:

A trusted name in real estate since 1997. Your goals are our goals, and we work hard to make them a reality. Negotiations, Comparative market analysis, photography, advertising, and open houses are handled with the utmost in professionalism and discretion to achieve the best possible outcome in your real estate transaction .

We'd be pleased to meet with you to discuss how Rose Homes/LAER Realty Partners can work most effectively with you to sell your property. To arrange for a consultation, contact the Rose Homes office today at 508-763-3121 or email us at RoseHomes@LaerRealty.com

<https://www.rosehomesrealestate.com/>



ROSE HOMES

— LAER REALTY PARTNERS —



PACE YouthBuild is Seeking Candidates for the July 2020 Class

PACE YouthBuild is a Non-Traditional Route to Career Opportunities

(New Bedford, May 29, 2020) – PACE YouthBuild is excited to announce that we are currently accepting applications for our July 2020 class. YouthBuild has been serving out of school, 16-24-year-olds in Greater New Bedford, since 1995. YouthBuild offers a unique program, that combines classroom, hands-on and real-world training to help young people achieve employment success as adults.

The model fosters a supportive mini-community of youth and adults with explicitly positive values that encourage members to define and achieve their highest goals and aspirations.

The program has evolved from the first YouthBuild program in Harlem, to addressing the needs of the youth in our community today, while staying true to our roots. PACE YouthBuild is an excellent non-traditional route to career opportunities. The PACE YouthBuild Path to Employment Success, combines: Vocational Skill Advancement in Construction and our new CNA track; Employment Success Training; Leadership Development; HiSET Preparation; Financial Literacy Savings, 5-Week Paid Internship and Success Coaching throughout and for 1-yr post-graduation.

“Our main goal is to train young people, that were unable to follow the traditional educational path, to achieve employment success as adults! A video with more in-depth information about our programming and our 2:00 pm Thursday Q&A session and an on-line application are all available on our website at www.paceinfo.org. There are only 4 weeks left until our next

class that will begin their programming virtually. This next group will share a unique virtual experience that will include YouthBuild programs statewide and from New York,” states YouthBuild New Bedford Director, Lisa Mello-Frost.

PACE YOUTH BUILD is currently located at 127 Rodney French Blvd, New Bedford, MA 02740. **For more information call: 774-473-8439 or email at kathykruger@paceinfo.org**

PACE YouthBuild Mission:

PACE YouthBuild believes that our youth are a valuable and underutilized resource in our society. Given the opportunity, youth can and will take responsibility for themselves and their communities. With real work and meaningful education, youth can become powerful agents for change in our society

Navigating the South Coast Real Estate Market with Rose Homes

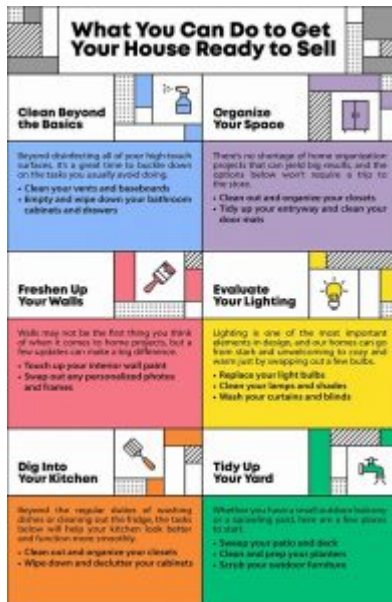
There is no doubt about it – coronavirus has dramatically changed the world markets and our daily lives. Despite the day-to-day stresses on all of us, one thing we have seen is that the housing market is still moving along steadily. Here in Massachusetts, we still have more demand than supply, so it is still a heavy seller’s market.

If you are thinking about potentially **selling your home** but are cautious about how it works in the era of COVID-19, we are here to help you. We can make the process as smooth as possible

while also limiting your exposure to anyone that isn't 100% necessary.



- Each home, apartment, or business receives free professional photography and a virtual video walkthrough. This means that we can “show” your house by sending buyers the walkthrough without them ever having to come into it.
- All of your paperwork can be signed electronically. No need to get together, we can practice social distancing!
- You have a lot less competition right now! Like any market, your home doesn't exist in a vacuum – it is competing against many homes all over your area. So less competition = more eyes on just your home and more buyers coming your way.
- Curb appeal is easier than ever! Curb appeal is key to selling your home for the price you want and most of the time people are way too busy to have time for it. Now that you are at home, put some of that energy into sprucing up your front yard and making it shine.
- Buyers are a lot more serious. You have heard the stories of the buyer who looks at 20+ homes before making a decision right? Sadly they are true. During this crisis though, we have seen that buyers are much more serious about purchasing and not wasting seller's time.
- No in-person open houses!



At **Rose Homes – LAER Realty Partners**, we are fully committed to working with you while keeping both of us and our families safe. We will work to create a virtual experience for you so that you can get the most out of selling your home while also coming in contact with as few people as possible. Together, we have 33 offices and over 500 agents, so we have a lot of experience and expertise to draw on! We also have Spanish and Portuguese speaking agents ready to help as well. Let's talk today.

Rose Homes/LAER Realty Partners

208 Washington St

Fairhaven, Ma. 02719

508-763-3121

www.RoseHomesRealEstate.com

Email: Rosehomes@laerrealty.com