

Chamber Music Series Presents "Oboe Chaud" November 7 & 8



*The New Bedford
Symphony celebrates
its 100th
anniversary this
2015-16 season!*

The South Coast Chamber Music Series presents "Oboe Chaud" on November 7 & 8. In this second concert of the four-concert series, the spotlight is on oboist Donna Cobert as she performs two unique English works, Ernest Moeran's rhapsodic Fantasy Quartet and York Bowen's spicy sonata for oboe and piano. Also performing are Piotr Buczek, violin; Don Krishnaswami, viola; Timothy Roberts, cello; and Janice Weber, piano. The program includes Shostakovich's haunting second Piano Trio, making its South Coast debut, along with the masterly Piano Quartet of Robert Schumann. Performances are Saturday, November 7, at 5pm, St. Gabriel's Church, 124 Front Street, Marion and Sunday, November 8, at 4pm, Grace Episcopal Church, 133 School Street, New Bedford. Tickets are \$20 at the door.

In 1915, New Bedford schoolteacher Clarence Arey founded a symphony orchestra to bring classical music to our region. Today, the NBSO is a superb professional orchestra that performs with internationally renowned guest artists, annually

presenting a 7-concert series of classical and pops music and a 4-concert chamber music series, as well as providing nationally recognized educational programs for the children of South Coast. You deserve a symphony in your life—the New Bedford Symphony! Visit us at www.nbsymphony.org.

November is New Bedford Open Studios month – guide to all you need to know!



The 11th annual New Bedford Open Studios tour takes place throughout November, 2015.

These studios and galleries are in re-purposed former mill buildings around the city. It kicks off on Saturday, Nov. 7 at Kilburn Mills Studios, 101 W. Rodney French Blvd. from 10 a.m. – 5 p.m. Then, it moves to The Ropeworks, 123 Sawyer Street, on Saturday, Nov. 14 from 10 a.m. – 5 p.m. and Sunday, Nov. 15 from 11 a.m. – 5 p.m. Finally, it winds up at Hatch Street Studios for a grand finale over three days: Fri. Nov. 20 5 – 9 p.m.; Sat. Nov. 21 10 a.m. – 5 p.m.; and Sunday, Nov. 22 11 a.m. – 5 p.m. Your details can be found at

NewBedfordOpenStudio.org
Facebook.com/NewBedfordOpenStudios.

and

Okay – the New Bedford Open Studios tour is on your calendar. But...you may have some questions about just what an Open Studios tour is all about and what you can expect.

We're here to help with this handy guide to the New Bedford Open Studios tour in 2015.

Frequently Asked Questions are:

How much is the New Bedford Open Studios Tour?

It's FREE.

How does it work?

Artists open their doors to some of the most inspiring spaces in the city for a day or weekend and you walk in and check it out. Some artists will be guest artists from outside the area simply displaying their work. That's it. You make the tour your own. You can spend 1 hour or 4 hours in any one building visting the different studios.

These buildings are big. Are there a lot of stairs to climb?

Surprisingly few. The Ropeworks is all on one floor. You could roller-skate through it. Hatch Street Studios has a gazillion stairs to the fourth floor – BUT there is an elevator and a very friendly elevator operator who will whisk you up faster than Scotty beamed Spock through space. Kilburn has a few stairs here and there but hey, you need some exercise.

Why should I go on the New Bedford Open Studios tour?

You want to support an artist you know.

You want to see a lot of art.

You want to buy art.

You want to get inspired making your own artwork.

You want to expose your kids to the creative life.

You never miss a chance to see the insides of beautiful old mill buildings.

You are curious about what contemporary, working artists are making.

You want to support living artists rather than dead ones.

You want to talk to artists about how they create their work.

You wonder what it would be like to be an artist.

You need a good dose of inspiration in your life.

You really need to get out of the house.

Do I have to talk to the artists?

Nope. Not unless you want to. These are experienced professionals who are accustomed to having people view their work in art galleries. Don't feel the need to chat unless you want to. But...

Should I talk to the artists?

Absolutely! Ask them about the medium they work in. Is it oil? Acrylic? Printmaking? Ask them about the process. How did you make that? Ask about their inspiration. Where do you get ideas for your work?

Don't worry about asking "dumb" questions. There are none. All artists participating in the New Bedford Open studios tour want to hear what you think. They will appreciate your curiosity.

Can I buy some art?

Absolutely again! While there is no obligation to buy art on the tour, there is no reason why you shouldn't. The New Bedford Open Studios tour is an opportunity for artists and art patrons to connect. If you want to support working artists, you'll find plenty to choose from on the tour.

Some artists and artisans will have their prices displayed. Some will have a price sheet. Some will negotiate a price. Some accept commissions – and this is your chance to find them.

In case you see something that you love, bring cash, a checkbook, and some artists – but not all – do accept credit

cards. If you buy a piece, some artists will let you walk away with it, some might ask you to come back to pick up.

How do I keep in touch with artists after the tour?

When you find an artist whose work you like, there are several ways to keep the connection going.

Sign their guest book and include your email so they can keep in touch with you.

Take their cards, post cards, or other take-aways to help you remember them and their work.

LIKE their artist page on Facebook and follow the artist on Instagram and/or Twitter if they're on social media.

The New Bedford Open Studios tour only happens once a year but many artists and patrons enjoy year-round relationships. And that all starts this November in New Bedford.

Find out more at NewBedfordOpenStudio.org and Facebook.com/NewBedfordOpenStudio.

State Police Investigating Crash that Killed Elderly Pedestrian

The Massachusetts State Police continue to investigate the death of a Revere man, who passed away after he was struck by a car as he walked across Revere Beach Boulevard in a marked crosswalk last weekend.

Allen Flynn, 86, died at Massachusetts General Hospital, to where he had been transported after being struck at

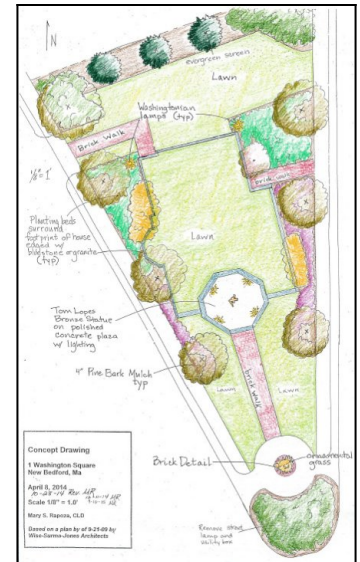
approximately 10 a.m. Saturday, October 24.

Preliminary investigation by Troop A of the State Police and the State Police Collision Analysis and Reconstruction Section indicates that Mr. Flynn was walking in the crosswalk in an easterly direction, away from the area of Bianchi's Pizza and toward the beach wall, when he was struck by a 2003 Honda Civic operated by a 21-year-old East Boston man. Preliminary investigation indicates the Honda's driver made a hard brake application immediately prior to the impact.

Mr. Flynn was transported by ambulance with serious injuries and later died at the hospital. State Police secured the Honda for further examination of the vehicle. Evidence at the scene was documented by State Police Crime Scene Services and collision reconstruction troopers.

The cause of the crash remains under investigation to determine if criminal charges are warranted against the driver. No further information is being released at this time.

**Mayor Mitchell, City Council
and Community to Celebrate
the Groundbreaking of "Tom
Lopes Park"**



Thursday, October 29, 2015 at 3:00 P.M. at the City-owned lot known as One Washington Square (where County and South Sixth Streets meet).

In June of 2015, in support of the family of Tom Lopes, Mayor Jon Mitchell formally proposed that New Bedford name a vacant City-owned parcel at One Washington Square, "Tom Lopes Park," to honor the first Cape-Verdean American elected to the Massachusetts House of Representatives, publisher of Cape Verdean News and longtime New Bedford neighborhood advocate and mentor.

The New Bedford City Council voted in support of the proposal and on Thursday, October 29, 2015 at 3:00 P.M., Mayor Jon Mitchell, members of the City Council, along with family and friends of Tom Lopes will gather at the city-owned lot at County and Sixth Streets for the ground breaking ceremony of Tom Lopes Park.

The Community Leadership Team of NeighborWorks has been working with Waterfront Historic Area League (WHALE), local

artist Erik Durant and others to design and build a memorial sculpture in honor of Tom Lopes. Fundraising is underway to support the memorial sculpture which will be sited in Tom Lopes Park.

“We honor Tom Lopes for many reasons, but primarily because he was a pioneer—a trailblazer, courageous, with eyes fixed on the horizon. The park and sculpture at a prominent gateway in our city will stand as a permanent reminder to present and future residents that one person can truly make a difference,” said Mayor Jon Mitchell.

In July, a portrait of Tom Lopes was unveiled at the New Bedford Free Public Library. On Friday, October 30, at 6:00 p.m. the documentary film, The Reel Tom Lopes, will premiere at the New Bedford Whaling Museum.

The South Coast Hot Jobs List – 29 October 2015



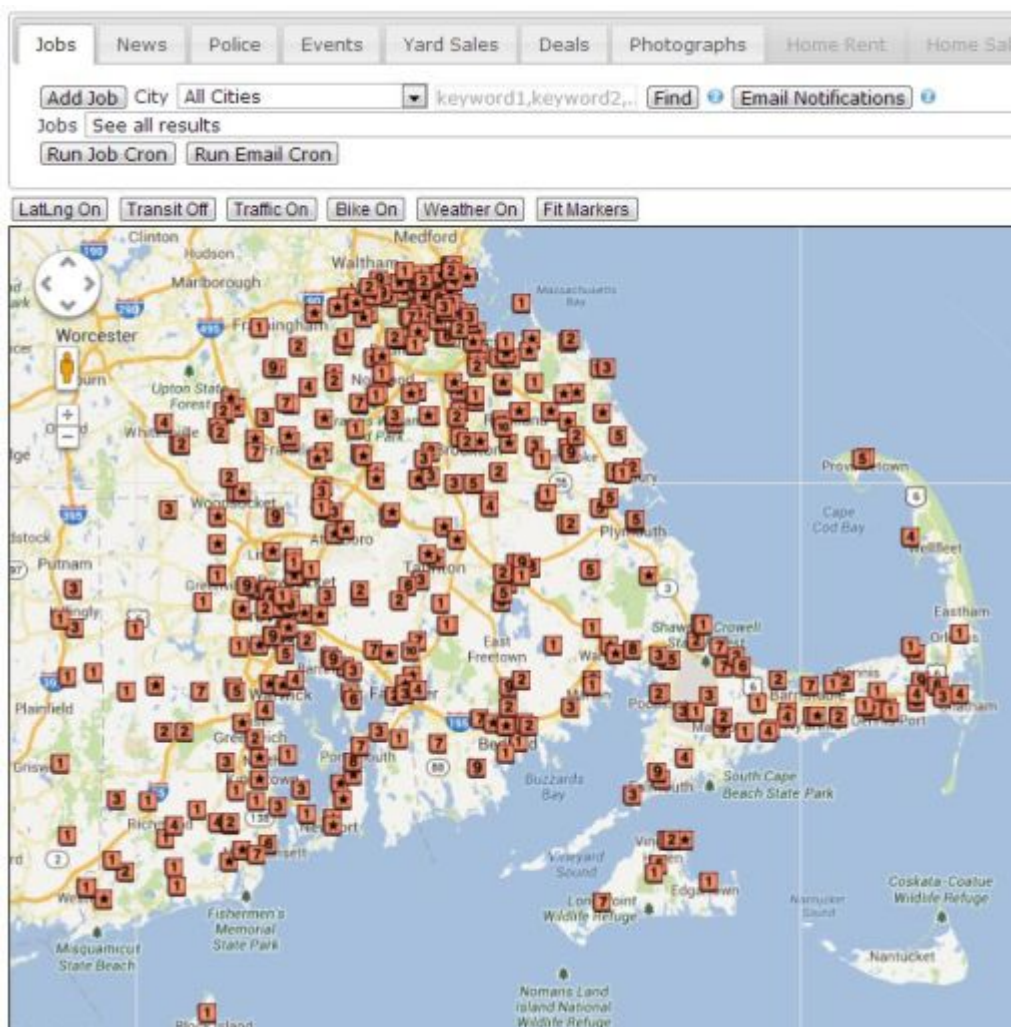
by
Michael
Silvia

The Greater New Bedford unemployment rate is much higher than the rest of Massachusetts, but believe it or not there really are a lot of available for qualified applicants. Sometimes the barrier to a new job can be the lack of information on

available job openings.

To solve this, each week New Bedford Guide will pull jobs from our **jobs database** to inform job seekers about the hottest jobs in the area.

We will define “Hot Jobs” as those jobs that need to be filled by the employer immediately. For those looking to search some large job databases, checkout my **Best Job Search Resources for New Bedford Residents** article.



Here are the Hot Jobs in the New Bedford area from the **NewBedfordGuide.com jobs database**, as of October 29, 2015:

01. Account Manager – Seniorlink & Caregiver Homes (New Bedford)

The Account Manager (AM) is responsible for executing the sales and marketing plan in a defined territory. The AM will work closely with state and branch management to promote the Caregiver Homes program with the goal of meeting/exceeding qualified case and active case goals. The AM will report to the Director of Sales and Marketing (DSM). The AM will interface regularly and effectively with Area Directors, District Managers, Branch Managers, and Clinical Managers to understand and be responsive to internal and external factors that may affect customer service, capacity and demand issues. Full job descriptions [here](#).

02. HVAC Service & Installation Technician

Brodeur & Sons, Inc., is currently seeking EXPERIENCED HVAC SERVICE & INSTALLATION TECHNICIAN for an immediate opening. Oil burner license and CDL/Hazmat license a plus, but not necessary. If you are a hard worker with dedication to superior customer service, please call our office for an interview. We can be reached at 508-995-5151 or at phbrodeur@aol.com. Or stop by our office at 525 Church Street, New Bedford, MA 02745, office hours are Monday through Friday 8am to 4:30pm. Full details and application process [here](#).

03. Billing Specialist – Greater New Bedford Community Health Center

Responsible for all required patient billing activities for the Health Center; including: posting, collecting, and monitoring payments; researching and solving third party billing issues; as well as tracking encounter forms and obtaining documentation. Full details and application process [here](#).

04. City Planner – (City of New Bedford)

The city of New Bedford is accepting applications for City Planner, salary \$66,722-\$81,388, in the department of planning, housing and community development. Serves as a lead planning professional performing a variety of supervisory, administrative, technical and professional tasks in the

initiation, oversight and execution of future short and long-range city planning initiatives. Master's degree in planning, public policy or related field desirable, as well as graduation from an accredited four-year college or university with a degree in land use planning, urban planning or a closely related field required. Full details and application process [here](#).

05. General Manager – Papa John's Pizza

\$40,000 a year. Manage a restaurant team, recruiting new team members, maintaining adequate staffing levels, properly training team members, ensuring compliance with all Papa John's policies and procedures, and coach to improve performance. Provide an outstanding customer experience, including professionally and promptly responding to all customer concerns or issues. Solicit, share and utilize customer feedback to improve restaurant operations and build brand loyalty. Full details and application process [here](#).

06. Hair Stylist – Shine (New Bedford)

We are looking for talented hair stylists who love their work! Come join our team and be a part of this growing salon! Commission or rent! Full details and application process [here](#).

07. Chemical Operator – Ashland (New Bedford)

Rotating Shift Chemical Operator I goes through a continuation of operator training and development, giving a strong foundation in safety, batch packet use, and the operations of primary equipment. This position interfaces with every department on site, but especially with QA, Maintenance, Materials Control, Wastewater Plant, and with PED, giving feedback and assisting in process development. Full details and application process [here](#).

08. Retail Sales Associate – CubeSmart (New Bedford)

Responsibilities: Provide exceptional service to our Customers and Sales leads over the phone as well as to walk-in Customers. Recommend appropriate unit sizes and services based

on individual Customers' needs. Understand and explain the leasing process to Customers. Sell merchandise including packing / moving supplies and insurance to protect our Customers' goods. Operate POS system and take payments. Conduct daily visual and space audits of entire facility as well as perform lock checks. Prepare and make daily bank deposits. Full details and application process **here**.

09. Security Officer – St. Luke's Hospital (New Bedford)

High school diploma or equivalent plus additional specialized college courses in Law Enforcement, or a graduate of a recognized law enforcement academy required. May require obtaining Special Police/Constable powers within a designated municipality. Over three months up to and including one year's experience required. Valid Massachusetts driver's license plus the ability to obtain a MA firearms ID card or license required. Full details and application process **here**.

10. Waitress/ Waiter – Freestones City Grill (New Bedford)

An long established restaurant looking for waitstaff. Full or part time. At least one year experience, a team player, professional, neat, and knows how to smile. If you have the knack of keeping our guests happy and coming back for more we need to talk to you. Please send us your resume and your availability. Full details and application process **here**.

Be sure to also check out our Job Portal to find jobs by location on a map: **newbedfordguide.com/map-page#pm_jobs_tab**. Want to get e-mail notifications for new jobs? Checkout our **e-mail subscription service**.

State Police and Local Emergency Responders Rescue Lost Hiker

Yesterday afternoon, state police and local emergency services personnel responded to a report of a missing hiker on Tekoa Mountain in Russell.

At about 3:45 p.m., a 23-year-old woman from East Longmeadow, who became lost while hiking on Tekoa Mountain in Russell, called 911 for assistance. A state police helicopter and K-9 responded to the area. Members of the Huntington Police Department and Russel Fire Department set up a command post off of Route 20 at the Old Strathmore Paper Mill.

At about 5:00 p.m., the state police helicopter located the lost hiker on the mountain and directed emergency personnel to her location. A search team consisting of MSP troopers and members of the Russel Fire Department assisted the woman down the mountain while the helicopter provided necessary lighting so they could traverse the rough terrain. The hiker was uninjured and all made it safely off the mountain.

New Bedford Home Invasion Suspect Sentenced to Minimum

of Six Years in Prison

Bristol County District Attorney Thomas M. Quinn III announced today that a 22-year-old New Bedford man, who broke into a young couple's home and burglarized their home at gun point in the middle of the night last May, was sentenced to serve six to seven-and-a-half years in state prison Friday in Fall River Superior Court.

Donte Reed, formerly of 71 Spruce Street, pleaded guilty in August to an indictments charging him with Burglary Armed Assault on Occupant, Armed Assault in a Dwelling and Armed Robbery while Masked. Sentencing was delayed until last Friday due to a family illness that postponed the completion of a pre-sentencing report by a member of the probation department.

In the early morning hours of May 20, 2014, a 28-year-old female and a 29-year-old male were asleep in bed at their first floor apartment located at Winsper Street in the South End of New Bedford. The two awake to three masked men in their bedroom. One of the men had a gun pointed at them, one was considered to be the ringleader, and the other did not speak. The ringleader was armed with a crowbar. The masked men stole about \$2,000 in cash, jewelry, a guitar and various other personal items. The two victims remained in bed the entire time. The ringleader also took a credit card from the female victim and wrote down her pin number. After the robbery, the Vs went to a family member's house. They did not call the police and said they were afraid.

After a rapid investigation by New Bedford Police, detectives were able to ascertain that the victim's credit card had been used at a nearby ATM shortly after the robbery. Video surveillance at the ATM location shows the suspect, who police later identify as Donte Reed. When he is found by police, he is wearing the same sweatshirt as was seen in the ATM video on the morning of the robbery. The other two individuals involved

in the robbery have yet to be positively identified.

Assistant District Attorney Patrick Driscoll prosecuted the case and argued for the six to seven-and-a-half year prison sentence. The defendant had requested a five year state prison term. Superior Court Judge E. Susan Garsh presided over the case and also placed the defendant on five years supervised probation, to begin upon his release from prison.

OPINION: Concerned parent voices dissatisfaction with current school administration



Are you also disgusted with certain aspects of the current school system?

When is the truth about how bad a shape the school system is in going to make it to the public? After witnessing the outright lies at the school committee meeting last night, I

was absolutely shocked. Stating there are only a few teaching positions to fill is an outright lie. Anyone can do a quick search on School Spring and see that 81 positions are listed right now, which doesn't count teachers that have given their notice in the last couple of days.

Keith Middle School alone is losing teachers "left and right" as we speak, because they can't take working there anymore under the current administration (Dr. Bailey). If there ever was a case of "cooking the books," New Bedford is the prime offender right now. The administration does an unbelievable job of spinning the truth to avoid any public scrutiny, but as a parent of children in the school system, I am appalled.

My children have been in an advanced learning program since 4th grade at Carney Academy. They then continued advanced learning classes at Keith through 6th and 7th grade. Now, all of a sudden in 8th grade, that program was abandoned and they are outnumbered in their classes 2:1 by special needs students and "non-English learners," aka kids that can't speak English.

As parents, we were never notified of these changes, which is completely wrong. My kids come home on a daily basis telling us of fights in the hallways, food being thrown across the cafeteria at lunch, and getting pointed in the eyes with laser pointers. There are also classes in excess of 35 kids, some of which are science labs, which is an OSHA violation. Teachers are told to tell lies to parents when they are questioned about curriculum and class size, and are reprimanded if they tell the truth. Teachers have also been blocked from taking jobs in other New Bedford schools and even schools outside of the system.

Does this sound like a school system that is headed in the right direction? When is someone going to start asking Pia and her cronies some serious questions? The truth needs to get to the public!

Signed,
A seriously pi**ed off parent

City Prepares to Enforce Problem Properties Ordinance; Sends Notices to Nearly Two Dozen Property Owners



In April of 2015, New Bedford enacted an ordinance proposed by Mayor Jon Mitchell designed to offset the heavy burden that certain residential properties impose on New Bedford police resources and to encourage absentee landlords to manage their properties responsibly.

In an effort to give fair notice, the New Bedford Police Department sent notices to property owners who would have been assessed police response calls if they had been subject to the ordinance from March 2014 through March 2015.

The new ordinance allows the City to declare a residential property a "problem property" once there have been eight "valid complaints" concerning criminal activity linked with the property in the previous twelve month period. Once a property is declared a "problem property" the City has the authority to seek reimbursement for the cost of any future police responses to that property.

The notices were also sent to the presidents of the banks that hold the mortgages on those properties, so as to alert the banks to the risks the properties are causing in their neighborhoods. It is the City's hope that the banks will become more closely involved with those properties and take steps to prevent future violations.

"As part of our ongoing efforts to provide ample notice to landlords so that they may take action to prevent their properties from being designated as problem properties, the New Bedford Police Department has conducted a review of police responses during the year prior to the enactment of the ordinance (March 2014 to March 2015). After reviewing the information, I have sent letters to the owners of nearly two dozen properties whose property was visited at least sixteen times by the New Bedford Police Department for valid complaints of criminal activity during that period," said New Bedford Police Chief David Provencher.

"Though our Neighborhood Task Force has been successful in dealing with code violations across the city over the last few years, we still have work to do. There are a relatively small number of the properties in the city that account for a disproportionate amount of crime, in part because landlords fail in their duty to manage their properties. That's why I

pushed hard for the passage of the Problem Property Ordinance, which will force those landlords to pay more attention to their properties,” said Mayor Jon Mitchell.

Although valid complaints in this period would not count toward the designation of a problem property, they may be a predictor of future criminal activity at the property.

‘London to Glastonbury’ art show brings a slice of England to New England, Nov. 7-Dec. 5



Show Length: November 7th – December 5th, 2015

Name of Show: "London to Glastonbury"

Artist: Heather Berthelette

"About" Blurb: "England: a not-so-far away land of enchantment and curiosity, captured in paintings by the artist who traveled them. A little bit of England comes to New Bedford through the recent oil paintings of local and traveling artist, Heather Berthelette. The works will be on display from November 7th – December 5th, 2015 at TL6 the Gallery, 100 William Street, New Bedford, MA.

Key Dates: "Afternoon Tea" – Saturday, November 7th, 2015 – 3:00-7:00 PM

"Don't be late" for this special event: merry ol' England is coming to downtown New Bedford. In celebration of the latest painting series by Heather Berthelette, "London to Glastonbury," come enjoy a traditional cup of English tea with the artist and taste the treats of a proper tea time.

AHA NIGHT Gallery Opening: Thursday, November 12th, 2015, 5:00-9:00 PM
