

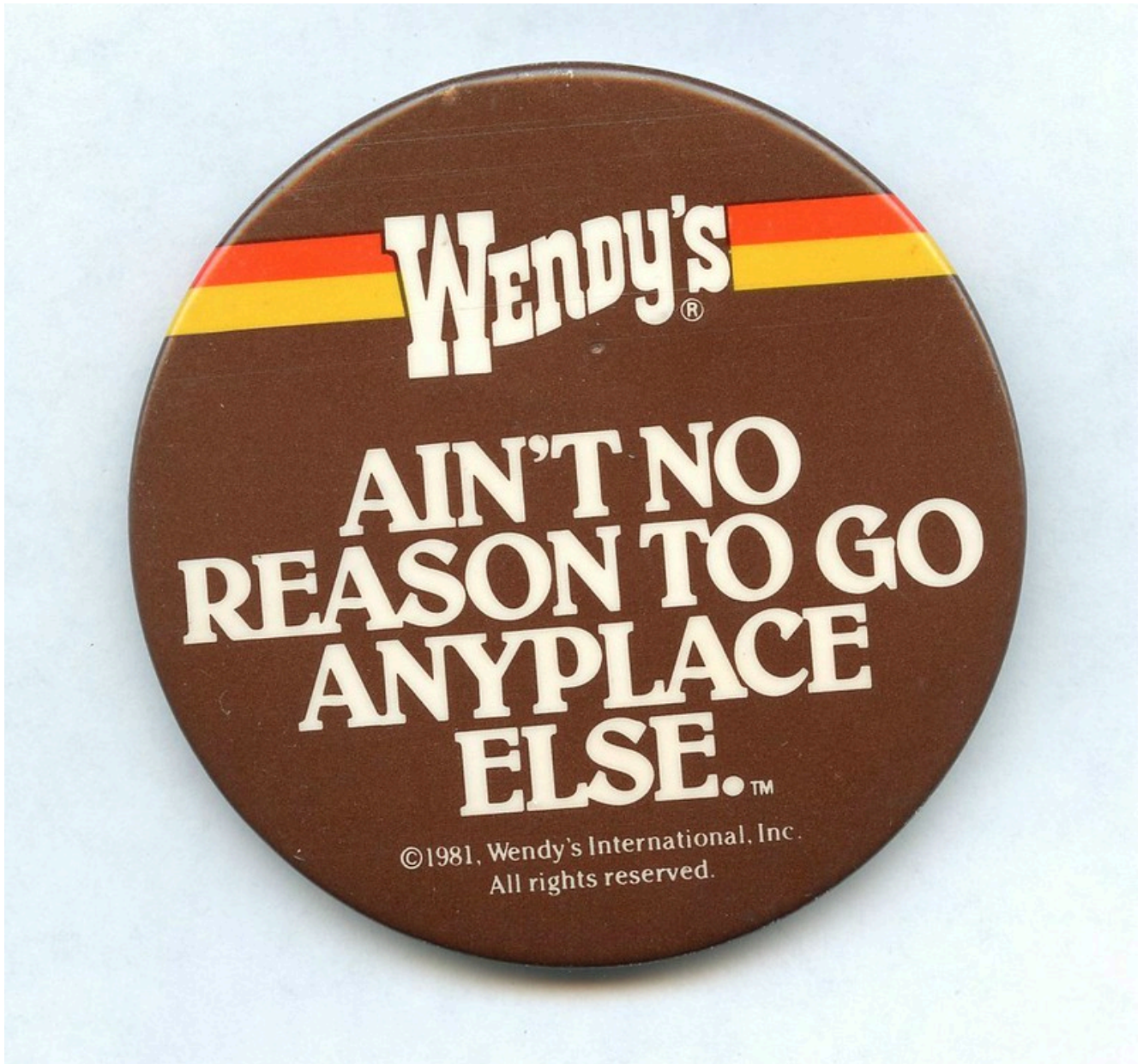
# Wendy's Will Test Surge Pricing In Some Of Its Restaurants

Just imagine that you have been waiting in line at your local Wendy's during the lunch rush, but when you pull up to order everything on the menu is a dollar more than usual. That scenario may soon become real, because Wendy's plans on testing surge pricing that will increase the price of its spicy nuggets, burgers, Frostys, and other favorites during its busiest times. How do we feel about this? Uber does this for its rideshare app, but should is this a sustainable business practice in fast food?

Earlier this month, Wendy's CEO Kirk Tanner has this to say: "The fast food chain plans on investing \$20 million to roll out digital menu boards to US-based restaurants by the end of 2025. As part of the change, Wendy's will also introduce something called "dynamic prices" that will change the prices on the digital menu boards based on demand. It sounds similar to the surge pricing system implemented by Uber, which charges riders higher rates in busy areas."

"Beginning as early as 2025, we will begin testing more enhanced features like dynamic pricing and day-part offerings along with AI-enabled menu changes and suggestive selling," Tanner says. "As we continue to show the benefit of this technology in our company-operated restaurants, franchisee interest in digital menu boards should increase further supporting sales and profit growth across the system."

Won't this practice simply drive customers to their competitors or can we expect other industry leaders to follow suit? This vintage Wendy's ad reminds of the good times...



---

## **The Northeast Home Show Returns In April And Is Looking For Vendors**

**There are exciting Vendor Opportunities at the Northeast Home Show in 2024!**

Are you ready to showcase your brand to a vibrant and enthusiastic audience? Join us at the Northeast Home Show, happening April 27-28 at the Longplex Sports Center, Tiverton, RI. This is your chance to connect with industry professionals, homeowners, and home improvement enthusiasts!

**Everyone who attends the show has a chance to win a brand new Kia Sorrento or \$30,000 in cash, courtesy of Rte. 6 Automall Kia of Swansea!**



? Mark your calendars:

**Event Dates:** April 27th (12 PM-7 PM) & April 28th (10 AM-5 PM)

**Venue:** Longplex Sports Center, Tiverton, RI

Don't miss this opportunity to be a part of one of the most sought-after home shows in the region. Spots are filling fast!

? Ready to make a mark? **Follow the link to secure your spot and learn more about our vendor opportunities:**  
<https://www.northeasthideshow.com/exhibit-with-us>

The **Northeast Home Show** is the complete showcase for all your needs in home and garden. Visitors have the opportunity to see and experience the latest home and garden trends and innovations, listen to accomplished designers, watch creative demonstrations, source and buy new products and so much more.

**Here are some great exhibitors who have already signed up for**

**the show:**

Pella Windows & Doors

RTP Roofing

RoofTop Power

Interlock Industries, Inc. dba Interlock Metal Roofing

Rocha Girls Power Washing

Renewal by Andersen

Precision Window & Kitchen, Inc.

Bettencourts Garage Door

Casanova Remodeling Company LLC

SUPERIOR SLEEP EXPERIENCE

Leafguard

Isaksen Solar & More!

Tickets to the show can be purchased here:

<https://www.eventbrite.com/e/northeast-home-show-tickets-764203763027>

*Use code B0G02024 to get a discounted ticket!*





---

## Winter Storm Watch issued for Greater New Bedford and Bristol County

WINTER STORM WATCH IN EFFECT FROM LATE MONDAY NIGHT THROUGH LATE TUESDAY NIGHT:

Models are predicting as little as one inch and as much as ten inches, here is the worst case scenario.

\* WHAT...Heavy snow possible. Total snow accumulations of 4 to 8

inches possible. Winds could gust as high as 50 mph.

\* WHERE...In Massachusetts, Southern Bristol and Southern Plymouth Counties. In Rhode Island, Washington and Newport Counties.

\* WHEN...From late Monday night through late Tuesday night.

\* IMPACTS...Travel could be very difficult. The hazardous conditions could impact the morning or evening commute.

As this further develops we will continue to update.

---

# **PACE Head Start Is Hiring For A Classroom Specialist In New Bedford**

**Work with an amazing team!**

PACE Head Start is looking for candidates with a passion for working with children in an early learning environment with the following qualifications and skills:

- BA in Early Childhood Education or a related field. EEC Director II qualified, supervision skills and experience in working with young children preferred, experience in Applied Behavioral Analysis preferred
- Knowledgeable about social-emotional development, child behavior, and using the Pyramid Model approaches to create plans that support self-regulation and pro-social intervention techniques for pre-school aged children
- Able to plan and implement small group activities for at-risk children to support age appropriate problem-solving

skills and social-emotional literacy

- Oversee the referral system with a Mental Health Consultant, complete child assessments, and collect weekly data to support interventions
- Able to work with educators to support classroom intervention strategies, improve classroom climate, and provide coaching and mentoring to develop targeted skills
- Must be able to pass a CORI and DCF background checks.

The candidate for this position will provide care to children at one of our New Bedford sites. To learn more about the program visit us at: [www.paceinfo.org](http://www.paceinfo.org) and click on the "Programs" tab.

Head Start and Early Head Start provides family-centered development programming for over 264 income-eligible families with children from birth to age 5 living in the Greater New Bedford area.

Excellent benefits include paid vacation time, personal time, sick time, and holidays; low-cost health insurance, dental, vision plans, and no-cost life insurance.

SALARY: \$27.87 – \$30.37 per hour, 30-40 hours per week, 46 – 52 weeks per year

P.A.C.E. is an AFFIRMATIVE ACTION/EQUAL OPPORTUNITY EMPLOYER

**E-mail a cover letter, resume and the name of the position you are applying for to:** [hrjobapplications@paceinfo.org](mailto:hrjobapplications@paceinfo.org) – Open until filled



---

# New Bedford's KRAVE Restaurant To Close Permanently

In a Facebook post earlier today it was announced that Krave Restaurant and Bar was closing its doors. The site of the former Chuck's China Inn had been remade over the past couple of years with mixed results. Here is the entirety of the post:

"Dear Valued Patrons,  
It is with a mix of emotions that we share this heartfelt message with our cherished Krave community. After careful consideration, we have made the difficult decision to permanently close Krave Restaurant and Bar.

This journey has been incredibly rewarding, thanks in no small



part to the unwavering support and loyalty of customers like you. Your patronage has been the heartbeat of Krave, and for that, we extend our deepest gratitude.

We want to express our appreciation for the memories shared, the laughter echoing through our walls, and the joyous moments celebrated. Your support has been the cornerstone of our establishment, and we are profoundly grateful for the relationships formed within these walls.

To our staff that stood with us throughout our journey we appreciate your dedication and loyalty even through our struggles. It didn't go unnoticed.

As we say goodbye, please know that your presence and support have left an indelible mark on our hearts. We are immensely thankful for the privilege of serving you and being a part of your lives.

This chapter may be closing, but the memories and connections forged will forever remain a cherished part of Krave's legacy. Thank you for being an integral part of our journey."

With heartfelt appreciation,

The Ownership and Staff of Krave Restaurant and Bar

---

## **Lifestream Inc. is Hiring for a Behavioral Specialist and Offering a \$1000 Signing Bonus**

**Come join one of the area's largest employers!**

No weekends! Schedule is: Mon-Fri 8am-4pm

Up to \$1,000 signing bonus for new hires (paid out at 30, 60 and 90 days) ask more details!

Hourly rate starting at \$19 or \$20 depending on MAP certification. Medical insurance starting at \$30 weekly.

**Click [HERE](#) to apply.**

LifeStream is an equal opportunity employer

### **ESSENTIAL DUTIES AND RESPONSIBILITIES:**

In this role as a Direct Support Professional, you will assist individuals in creating meaningful opportunities to fully participate in the running of their home and become fully immersed in the communities in which they live.

The day to day operations of the residential home will reflect an environment that values respect, dignity, and privacy.

Direct support professionals recognize the unique gifts, preferences and needs of each person supported.

They partner with them in making informed decisions and everyday choices about their finances, well-being, relationships, and employment

Assist all individuals with their daily needs and ensure that all activities are reflective of their choices.

A full job description is available upon interview.

### **QUALIFICATIONS AND REQUIREMENTS:**

Valid Driver's license

Once hired, must attend LifeStream orientation and trainings.

Access to a vehicle

### **EDUCATION and/or EXPERIENCE:**

No experience is required to qualify for these positions. You need a high school diploma or GED

LifeStream provides community-based services that support

individuals in attaining greater independence, promising opportunities, and lives that are meaningful and fulfilling on their own terms.

To see available positions visit [www.lifestreaminc.com/careers](http://www.lifestreaminc.com/careers)

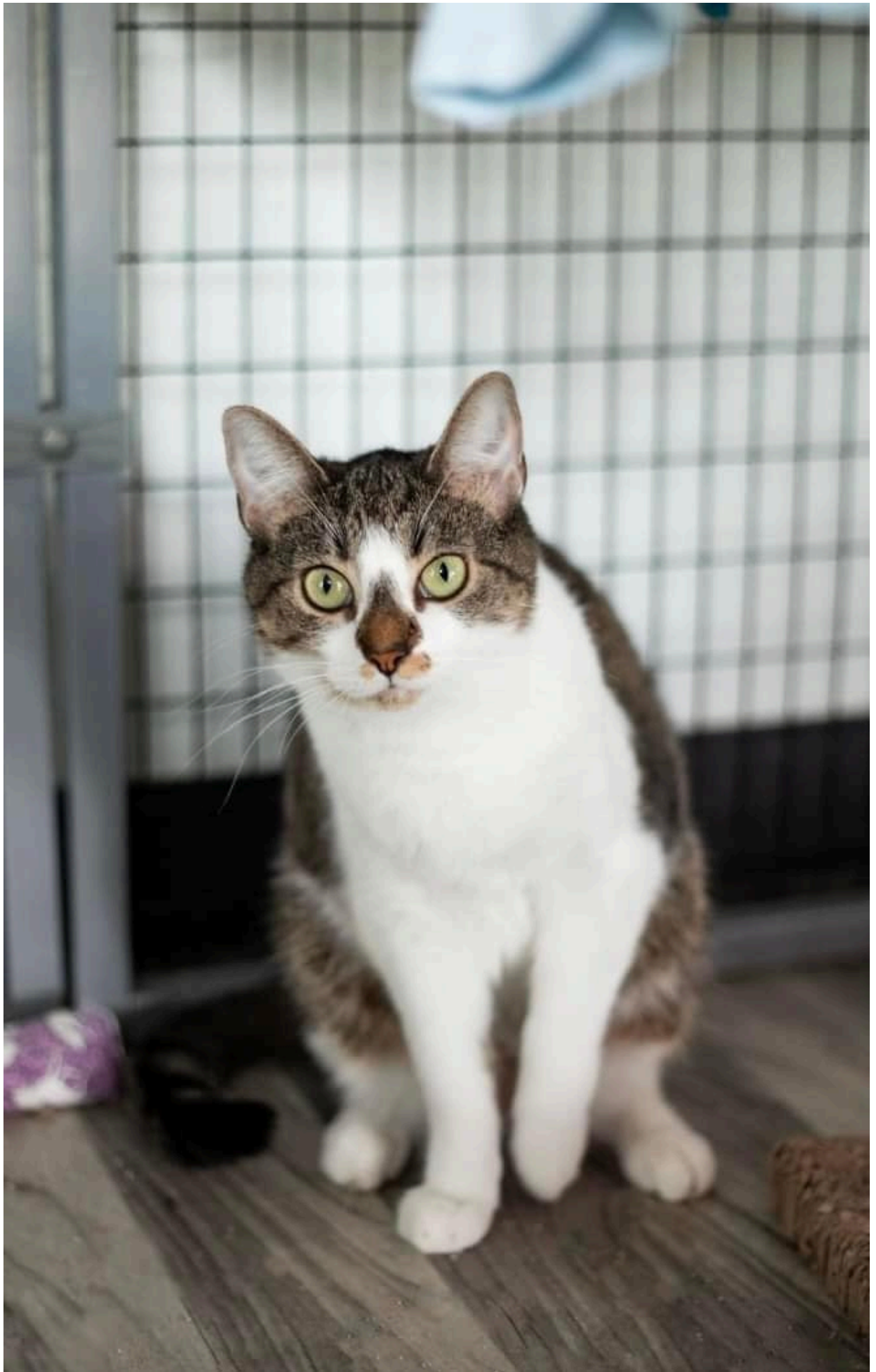
---

## **CARE Southcoast Pets Of The Week Feature Adorable Bonded Pair**

As seen on the CARE Southcoast Facebook page:

**Lets find these deserving cats a new FUREVER home for the holidays!**

Mouse & Chipmunk are still looking for their forever home! They have been in the care of Care, Southcoast since 6/13/22 – 497 days!!??



Mouse (little brown nose and white stripe on shoulder): Sweet, intelligent, food motivated, talkative. Mouse is a very smart little lady, she loves to play, especially with laser pointers. She learns very quickly and will come running across the house if she hears the laser pointer being picked up. She is hand shy and will require acclimation time in her new home. I am very confident she will bond with people but it will take a lot of time, she moves away when you reach out to pet her but doesn't run away. Very happy to be touched if you have churus or other delectable treats. She absolutely needs a kitty companion in her new home, she loves to snuggle. Willing to be touched if next to another confident cat.

Chippy (chipmunk): sweet, skittish, talkative, inquisitive. Chippy is a beautiful small cat who likes to spend her time grooming and wrestling her sister. She is very cat oriented and a little more hand shy than her sister. She likes to be around you and will sit on the couch next to you but prefers not to be touched until she really gets to know you.

If you would like to meet the bonded pair you can do so during open hours (Wednesday's from 6-8pm and Saturday's from 10-1). If you would like to adopt Mouse and Chipmunk please click the link below to our online adoption application. **APPLY HERE:**  
LINK:

[https://form.jotform.com/200997587139168?fbclid=IwAR3dJgxAuDl1bW2oMWXathRaikANR6JK0IsqX1Ew9vtpo-oyVA\\_zWtywzEY](https://form.jotform.com/200997587139168?fbclid=IwAR3dJgxAuDl1bW2oMWXathRaikANR6JK0IsqX1Ew9vtpo-oyVA_zWtywzEY)

? courtesy of Jessica Charron photography

---

## Lifestream, Inc. Awards New



# Bedford Woman Nursing Scholarship

Leida Rodrigues of New Bedford has been selected as the 2023 recipient of the \$2,000 Sandra M. Cabral Nursing Scholarship. Congratulations!

Leida, currently a Personal Advocate at one of LifeStream's community-based residences, knew early on that she wanted a career in the healthcare field. Following her graduation from New Bedford High School she enrolled at Bristol Community College where she received an associate degree in health studies and science while also working as a Health Unit Coordinator at Saint Luke's Hospital. Leida is currently enrolled at Laboure College of Healthcare in Milton, Massachusetts where she is pursuing an associates degree in nursing to become a Registered Nurse. Additionally, she was a member of a Cape Verde medical mission team last April, and currently serves on the New Bedford Opioid Task Force.

Leida resides in New Bedford with her two children.

"Leida's academic background, work experience, and passion for the individuals she supports make her an ideal candidate for this scholarship," said LifeStream President/CEO Bonnie Mello. "We are thrilled to assist Leida in her healthcare career journey."

The scholarship, established in 2000, honors the noteworthy contributions to the field of nursing made by former LifeStream employee Sandra M. Cabral who was a registered nurse and nursing coordinator. Reflecting Cabral's career and LifeStream's mission, the \$2,000 scholarship is offered to enhance the quality of medical support available to people with disabilities living in community settings.

LifeStream provides community-based services that support

individuals in attaining greater independence, promising opportunities, and lives that are meaningful and fulfilling on their own terms. **Lifestream has provide service to thousands of your friends and neighbors, want to work for them?** Apply here: <https://www.lifestreaminc.com/careers/>



# LifeStream

---

## **Empire Ford of New Bedford is looking for a full-time Receptionist/Cashier**

Come work for a great team!

### **Job description**

We are seeking candidates who enjoy working with the public and have a friendly, outgoing personality. As a team-oriented company, we seek employees who can be flexible with their work hours. The ideal candidates are dedicated to provide exceptional customer service and display a positive attitude when interacting with customers and employees.

Our NEW BEDFORD LOCATION hours are Monday – Thursday from 11am-7pm and Saturday from 8am-6pm. Empire Ford of New Bedford is located at 395 Mt. Pleasant St., New Bedford, MA 02746

**Duties:** Answering phones, receipting money, balancing deposits for the shift, filing, assisting sales department with vehicle

documents, assisting service customers, various miscellaneous duties. Dress code: Business Casual.

Must perform basic math skills to collect payments and make change. Must operate registers, scanners, credit card/debit card payment machines and must have basic computer skills. Will be required to handle refunds in a quick and efficient manner, maintain an accurate cash drawer and take a tally of the funds in the cash register at the end of the shift. You will also be answering phone calls and transferring to the correct department. This position requires strong attention to detail and the ability to multi task.

Portuguese and/or Spanish speaking a plus.

Genuine desire to serve

Ability to handle multiple tasks at once

Meticulous attention to detail

Consistent composure

On Time & Reliable

Enthusiastic presence

Professional appearance and communication

Desire to be the best

**Job Type:** Full-time

Salary: \$15.00 – \$16.00 per hour

Expected hours: 40 per week

**Benefits:**

401(k)

Dental insurance

Employee discount

Flexible schedule

Health insurance

Paid time off

Vision insurance

**How to apply:** Please email resume to Jean Ostrom at [jostrom@empirefordinc.com](mailto:jostrom@empirefordinc.com).

---

# **‘Friends’ Actor and Massachusetts Native Matthew Perry Has Died**

Matthew Perry, originally a MA native who gained stardom as Chandler Bing in the hit series “Friends,” has died. He was 54.

The Emmy-nominated actor was found dead of an apparent drowning at his home Saturday. This, according to the Los Angeles Times and celebrity website TMZ, which was the first to report the news. Both of these outlets cited unnamed sources confirming Perry’s death. Perry had previously detailed extensive drug and alcohol abuse during the peak of his career that followed him for years. Last year he opened up publicly about his struggles in his memoir.

Asked by AP to confirm police response to what was listed as Perry’s home address LAPD Officer Drake Madison told The Associated Press that officers had gone there “for a death investigation of a male in his 50s.”

The popular series Friends ran from 1994 through 2004. Recently, a reunion special in 2021 was hosted by James Corden and fed into huge interest in seeing the cast together again. No follow up or sequel to the show was ever seriously discussed.

Perry received one Emmy nomination for his “Friends” role and

two more for appearances as an associate White House counsel on "The West Wing."

—

Perry was born in Williamstown, Massachusetts, on August 19, 1969. His mother, Suzanne Marie Morrison (née Langford, born 1948), is a Canadian journalist who served as press secretary to former Canadian Prime Minister Pierre Trudeau. His father, John Bennett Perry (born 1941), is an American actor and former model.