

# Darlene Love bringing her passion to New Bedford's Zeiterion Theatre



Darlene Love will perform at the Zeiterion Theatre on Saturday, November 29th, 2014.

New Bedford is in for a treat next week. The amazing Rock n' Roll Hall-of-Famer Darlene Love will perform at the Zeiterion Theatre on Saturday, November 29th, 2014.

Darlene is a multi-talented star whose group sang a #1 hit song in 1962 (The Blossoms: He's a Rebel), played Danny Glover's wife in Lethal Weapon 1-4 and appeared as a regular on the David Letterman Show. Most recently, Darlene starred in the 2013 documentary "20 Feet from Stardom". The film appeared at the Sundance Film Festival, won the Academy Award in 2014 for Best Documentary, and was nominated by 16 other prestigious film awards. It took decades, but finally Darlene Love and other background singers were the featured act.



Remember Danny Glover's wife on Lethal Weapon? Darlene played Trish Murtaugh, Detective Murtaugh's wife.

I had the pleasure of interviewing Darlene on the phone a few weeks ago. I had heard of Darlene Love, but didn't know much about the woman. Like most hardworking background singers, she was always there in my life, but out of the spotlight. Remember Cheech and Chong's "**Basketball Jones**" song? Darlene was a background singer on that track. Remember Danny Glover's wife on Lethal Weapon? Darlene played Trish Murtaugh, Detective Murtaugh's wife. Did you watch the Academy Awards and notice

I asked her what it was like being featured on 20 Feet from Stardom.

"When I got the call from the producers, I let them know about several other background singers. The Blossoms (Darlene Love, Fanita James, and Jean King) were first black background group. The producer Gil Friesen called me and I gave him a rundown. It is hard to find material on background singers because we were always 20 feet behind the main act. I was featured because they had so much film on me. I was excited to be part of it and didn't realize how big it was going to be."

Darlene accepting the Oscar and taking the opportunity to show off her voice:

Throughout her career, Darlene has worked with a long list of stars like Aretha Franklin, David Letterman, Mel Gibson and Danny Glover, but her favorite performer to work with was Elvis.

“The most interesting person I ever worked with was Elvis. He was such an amazing person and being around him was wonderful. I did a movie and performed with him. We’d break for lunch and we would sing gospel together. Sometimes it could take hours to come down from the high of a show and Gospel was how Elvis relaxed after a show.”



Once you talk to Darlene and learn about her life story you’ll quickly realize that she is a strong, remarkable woman that is finally getting her due. In 1995 Love won the Rhythm and Blues Foundation’s Pioneer Award and on March 14, 2011, she was inducted into the Rock and Roll Hall of Fame with a speech by Bette Midler.

It’s rare that such an amazing, accomplished musician comes to New Bedford and fans of music should spend an evening with Darlene next Saturday. My suggestion is to watch **20 Feet From Stardom** this weekend or next week, and grab your Darlene Love tickets

now: <https://ticketing.zeiterion.org/public/Default.asp>. You

can thank me later.

For more details check out Darlene Love's website: <http://darleneloveworld.com/> or follow her on Facebook or Twitter.

---

## Review: You're a Good Man, Charlie Brown



Last night I had the pleasure of watching ONE Theater Group's very first production, *You're a Good Man, Charlie Brown*. Didn't make it? You have a chance to catch it this evening and Saturday at 7pm.

I love theater and constantly try to support charities. All of the proceeds from the three shows will be donated to the Alzheimer's Association. Watch an amazing show? Check. Support an important charity? Check.

If you are a fan of Charles M. Schulz's Peanuts comic-strip, *You're a Good Man, Charlie Brown* will have you grinning from ear to ear. If you are a kid, or love the quirky sense of humor that comes with The Peanuts, you'll be giggling all evening. I have proof. During Thursday's premier a small child was joyfully giggling during the show, which in turn made the rest of us in the audience smile and enjoy the show even more. Ahhhh ... to be a kid again.

The show is great for all ages. To my left was the uncontrollably giggling child, in front of me was an elderly group having the time of their lives and behind me a group of young girls forgetting their smart phones for the hour and twenty minutes. Yes, you read that correctly.



Stay after the show and get some photos with the cast!

The cast of *You're a Good Man, Charlie Brown* are absolutely amazing and the music is as catchy as any Disney movie. You'll have trouble finding the star of the show because all of the actors are equally amazing and given equal time. While Charlie Brown, played by Daniel Guay, is a fantastic lead and clearly the protagonist, he is surrounded by amazing actors/singers.

Ricardo Aguiar brings amazing energy, playfulness and range to



the role of Snoopy. You'll love "Suppertime" and his battle with the Red Barron. Your kids will be rushing the stage after the show to get pictures with him.

Kelsie Brejcha excels in the role of Sally Brown. You'll love her singing "My New Philosophy" and being frustrating with the world of jump ropes, hangers and anyone else that gets in her way.

Miss New Bedford 2014 Jillian Zucco choreographed the show and stars as Lucy. She performs some amazing duets with Charlie Brown and Schroeder, and really captures Lucy's personality of constantly picking on Charlie Brown and having a blinding love for Schroeder and herself.

14-year old and New Bedford Idol Champion Seth Sweeney does a fantastic job playing Linus and showcasing the love he has for his blanket any annoying vocabulary.

Greater New Bedford Regional Vocational Technical High School graduate Patrick Long does a great job playing Schroeder. Distracted by his love for Beethoven, he ignores Lucy at his own peril.

ONE Theater Group co-founders Ashley Bendiksen (producer) and Gregory Silver (director) did an amazing job bringing together a star-studded cast of amazing, local actors to hit a home run with *You're a Good Man, Charlie Brown*. This show is a win for the fight against Alzheimer's and anyone who decides to come out to enjoy the show.

The next two shows are Friday, November 21st and Saturday, November 22nd at the Fairhaven Town Hall Auditorium located at 40 Center Street in Fairhaven. Both shows are at 7pm, doors open at 6:30pm. Tickets are \$15 for adults and \$10 for children. Seating is general admission. Here's a preview of the show:

# Help Wanted: Garage Foreman (City of New Bedford)

CITY OF NEW BEDFORD

GARAGE FOREMAN \$49,984 – \$60,973

DEPARTMENT OF FACILITIES & FLEET MANAGEMENT

Supervises, trains and directs garage personnel in repairs, maintenance and fabrication of equipment throughout City departments. Supervises the inspection and/or troubleshooting of vehicles to approve them for compliance with Registry of Motor Vehicle standards.

Enforces existing procedures and policies, and develops new garage methods and procedures as authorized. Ensures adherence to applicable City, State and Federal health and safety rules and regulations. Maintains garage and equipment in clean and orderly condition.

Assists the Superintendent with researching equipment before purchase to ensure the City has received the best long-term value when purchases are made. Keeps up with any changes or improvements that may develop.

Maintains records of all personnel in the garage. Maintains records of purchases, requisitions, Registry files, accident reports, outside repairs, etc.

High school diploma or GED equivalent required plus some specialized training in motor vehicle repair, and three years of related experience in the management of fleet garage; or any equivalent combination of education and experience.

Thorough knowledge of automotive mechanics. Working knowledge of the hazards and safety precautions common to municipal maintenance and repair activities.

Possession of a valid Massachusetts driver's license with good driving record, including CDL Class B endorsement, vehicle inspection license, hydraulic license and/or ability to obtain these licenses within six months from date of hire. Mandatory CORI (Criminal Offender Record Investigation) background check per City Council Ordinance effective May 14, 2013.

For application/complete job description, please visit [www.newbedford-ma.gov](http://www.newbedford-ma.gov) or contact the Personnel Dept., 133 William St., Room 212, 508-979-1444. Applications will be accepted until a suitable candidate is found. New Bedford has a residency requirement. EEO

---

## **17 Things to do this Weekend (Nov 21- Nov 23)**

After a bitter Friday morning with temperatures as low as 18 degrees, we'll spend the rest of the weekend warming up. By Sunday afternoon we'll have reached a balmy 51 degrees! The sun will be out through most of the weekend, and there won't be any snow or rain. Cool weather is here to stay, so wipe the dust off of those Winter coats, thermals and stocking hats.





As always, click on the title for more or detailed information on the event. Most of the events were pulled from our [event calendar](#) where you can find hundreds of local area events each month. The event calendar is FREE, so if you are a local business, and not taking advantage of FREE publicity, shame on you! Are you a local business and want to sponsor this high traffic, weekend guide? Contact [info@newbedfordguide.com](mailto:info@newbedfordguide.com) for more details. Have an event to add? Check out our [tutorial](#). For more info, you can click on each title. Know of another event this weekend? Post a reply!

---

## Friday, November 21st

### **Edaville: XMas Festival of Lights & Polar Express Train Ride (Military Appreciation Weekend) (2:00pm-9:00pm)**

Edaville's Christmas Festival of Lights is arguably the most-loved festival of its kind, having earned generations of loyal fans. Passengers relax comfortably in warm and dry coaches while riding through a spectacular holiday setting featuring an explosion of lights. Kids of all ages will enjoy an array of vintage amusement rides and a visit with Santa in one of our indoor play areas. Stay for a delicious full meal or enjoy seasonal treats while roaming our sprawling and beautifully decorated grounds featuring thousands of Christmas displays.

Polar Express is inspired by the run-away hit movie! This

holiday favorite comes to life as you and your family take a ride on THE POLAR EXPRESS™ Train Ride. Set to the sounds of the motion picture soundtrack, families are sure to enjoy their trip to the North Pole, complete with hot chocolate and cookies served on board the train. Passengers will then be entertained by a reading of THE POLAR EXPRESS. Upon arrival at the North Pole, Santa will greet the children and each child will receive their own sleigh bell, just like in the movie, to those who BELIEVE.



*Have fun painting "Cabin In The Woods" at Painting w/ a Splash!*

**"You're a Good Man, Charlie Brown" Musical (For Alzheimer's) (6:30pm)**

ONE Theater Group is proud to announce its upcoming production of "You're a Good Man, Charlie Brown." The show is fun and entertaining for all ages, but it also serves a very important purpose – all of the proceeds will be donated to the Alzheimer's Association. The show is being produced by ONE Theater Group, a newly formed company in Fairhaven with a vision of combining theater and philanthropy. For more info click on event title.

**Painting with a Splash: Birch Tree & Cheers (7:00pm)**

Welcome to Painting with a Splash Where you are the artist!

Painting with a Splash is the newest addition to Historic Whaling City Downtown New Bedford. Bringing you an experience of art as entertainment. Add a little wine (BYOB) that will surely tap into your creative side. With step by step instruction and a little music, you and your friends will create the evenings featured painting with a splash of your own uniqueness. NO EXPERIENCE NECESSARY! Just a desire to have fun.

---

## **Saturday, November 22nd**

### **Silverbrook ACUSHNET Country Store – Holiday pies, cakes and cookies (9:00am-4:00pm)**

Thinking of the holidays and don't want to bake? Let the Pereira Bread Co. (a tasty little division of Silverbrook Farm) do the baking for you by ordering one of our famous pies, cakes and cookies. Pick up date is Wednesday, November 26th from 12:00-6:00pm. To order call 774-263-8850 or email [thesilverbrookfarm@gmail.com](mailto:thesilverbrookfarm@gmail.com)! Silverbrook Country Store also has a wonderful and unique line of crafts including their popular candle/potpourri items and a great selection of handmade Amish items that truly make great gifts for any occasion.

### **Gingerbread House Demonstration & Class (9:30am)**

If you have always wanted to learn how to construct a gingerbread house or if you are looking to take your baking and decorating skills to the next level, you will have the opportunity to do so at the Rotch-Jones-Duff House and Garden Museum during the Gingerbread House Demonstration. In this 1.5 hour class, Katherine Mullins will construct a house, sleigh and Santa as well as demonstrate techniques using royal icing and chocolate for "gluing." Take home a booklet with dough, icing and cookie recipes and an assortment of patterns.



*Great music and  
comedy while  
helping a cause!*

### **New Bedford Open Studios (10:00am-5:00 pm)**

Celebrating 10 years with a weekend of arts, food and giving! Helen Granger will be one of the artists taking part. Events taking place at Hatch Street Studios, 88 Hatch St. and Ropeworks, 123 Sawyer St. For information visit [www.newbedfordopenstudios.org](http://www.newbedfordopenstudios.org). Hatch Street Studios and Ropeworks.

### **It's Beginning to Look A Lot Like Christmas at the Newport Mansions (10:00am-5:00 pm)**

The glitter of gold and the sparkle of silver will dazzle you as you tour three magnificent mansions decked out in Yuletide finery. Music, tours, and spectacular decorations highlight the celebration of Christmas at the Newport Mansions. For more information, click on event title.

### **Edaville: XMas Festival of Lights & Polar Express Train Ride (Military Appreciation Weekend) (2:00pm-9:00pm)**

Edaville's Christmas Festival of Lights is arguably the most-loved festival of its kind, having earned generations of loyal fans. Passengers relax comfortably in warm and dry coaches while riding through a spectacular holiday setting featuring an explosion of lights. Kids of all ages will enjoy an array of vintage amusement rides and a visit with Santa in one of our indoor play areas. Stay for a delicious full meal or enjoy seasonal treats while roaming our sprawling and beautifully decorated grounds featuring thousands of Christmas displays.

Polar Express is inspired by the run-away hit movie! This holiday favorite comes to life as you and your family take a ride on THE POLAR EXPRESS™ Train Ride. Set to the sounds of the motion picture soundtrack, families are sure to enjoy their trip to the North Pole, complete with hot chocolate and cookies served on board the train. Passengers will then be entertained by a reading of THE POLAR EXPRESS. Upon arrival at the North Pole, Santa will greet the children and each child will receive their own sleigh bell, just like in the movie, to those who BELIEVE.

**Painting with a Splash: Dragonfly (15+) & 3 Glasses of Wine (3:00pm & 7:00pm)**

Welcome to Painting with a Splash Where you are the artist! Painting with a Splash is the newest addition to Historic Whaling City Downtown New Bedford. Bringing you an experience of art as entertainment. Add a little wine (BYOB) that will surely tap into your creative side. With step by step instruction and a little music, you and your friends will create the evenings featured painting with a splash of your own uniqueness. NO EXPERIENCE NECESSARY! Just a desire to have fun.

**“You’re a Good Man, Charlie Brown” Musical (For Alzheimer’s) (6:30pm)**

ONE Theater Group is proud to announce its upcoming production of “You’re a Good Man, Charlie Brown.” The show is fun and entertaining for all ages, but it also serves a very important purpose – all of the proceeds will be donated to the Alzheimer’s Association. The show is being produced by ONE Theater Group, a newly formed company in Fairhaven with a vision of combining theater and philanthropy. For more info click on event title.

**Bon Jovi Tribute Band and Comedian Pete Costello (7:30pm)**

Still a fan of Bon Jovi? How about some laughs? Comedy and music join forces at the Skyroom to raise money for the Dartmouth School Music Association National Champion Marching

Band and Indoor Team. National act, Bon Jovi tribute band "Living On A Bad Name" will headline with special guest, Boston comedian Pete Costello. 651 Orchard Street, New Bedford. Email: mjbccabral@gmail.com.

---

## **Sunday, November 23rd**

### **Lebanese food Festival & Craft Fair (Fall River) (9:00am-4:00pm)**

Come and enjoy home made Lebanese foods and pastries. Eat in or take out available. Shop our local crafters for that special holiday gift. We have a limited number of name brand coats (irregulars) for sale at great prices. Come and enjoy Lebanese hospitality. Email: terrygalib@comcast.net. St. Anthony of the Desert 300 No. Eastern Ave. Fall River.

### **Silverbrook ACUSHNET Country Store – Holiday pies, cakes and cookies (9:00am-4:00pm)**

Thinking of the holidays and don't want to bake? Let the Pereira Bread Co. (a tasty little division of Silverbrook Farm) do the baking for you by ordering one of our famous pies, cakes and cookies. Pick up date is Wednesday, November 26th from 12:00-6:00pm. To order call 774-263-8850 or email thesilverbrookfarm@gmail.com! Silverbrook Country Store also has a wonderful and unique line of crafts including their popular candle/potpourri items and a great selection of handmade Amish items that truly make great gifts for any occasion.

### **It's Beginning to Look A Lot Like Christmas at the Newport Mansions (10:00am-5:00 pm)**

The glitter of gold and the sparkle of silver will dazzle you as you tour three magnificent mansions decked out in Yuletide finery. Music, tours, and spectacular decorations highlight the celebration of Christmas at the Newport Mansions. For more

information, click on event title.



*Polar Express Ride  
(and XMas Festival of  
Lights) during  
Military Appreciation  
Weekend!*

**Painting with a Splash: SSunset Moon & Cabin In The Woods  
(11:00am & 6:00pm)**

Welcome to Painting with a Splash Where you are the artist! Painting with a Splash is the newest addition to Historic Whaling City Downtown New Bedford. Bringing you an experience of art as entertainment. Add a little wine (BYOB) that will surely tap into your creative side. With step by step instruction and a little music, you and your friends will create the evenings featured painting with a splash of your own uniqueness. NO EXPERIENCE NECESSARY! Just a desire to have fun.

**New Bedford Open Studios (11:00am-5:00 pm)**

Celebrating 10 years with a weekend of arts, food and giving. Helen Granger will be one of the artists taking part. Events taking place at Hatch Street Studios, 88 Hatch St. and Ropeworks, 123 Sawyer St. For information visit [www.newbedfordopenstudios.org](http://www.newbedfordopenstudios.org). Hatch Street Studios and Ropeworks.

**Edaville: XMas Festival of Lights & Polar Express Train Ride  
(Military Appreciation Weekend) (2:00pm-9:00pm)**

Edaville's Christmas Festival of Lights is arguably the most-



loved festival of its kind, having earned generations of loyal fans. Passengers relax comfortably in warm and dry coaches while riding through a spectacular holiday setting featuring an explosion of lights. Kids of all ages will enjoy an array of vintage amusement rides and a visit with Santa in one of our indoor play areas. Stay for a delicious full meal or enjoy seasonal treats while roaming our sprawling and beautifully decorated grounds featuring thousands of Christmas displays.

Polar Express is inspired by the run-away hit movie! This holiday favorite comes to life as you and your family take a ride on THE POLAR EXPRESS™ Train Ride. Set to the sounds of the motion picture soundtrack, families are sure to enjoy their trip to the North Pole, complete with hot chocolate and cookies served on board the train. Passengers will then be entertained by a reading of THE POLAR EXPRESS. Upon arrival at the North Pole, Santa will greet the children and each child will receive their own sleigh bell, just like in the movie, to those who BELIEVE.

*Want to sponsor this weekend guide? Contact [info@newbedfordguide.com](mailto:info@newbedfordguide.com) for more details.*

---

---

## **Help Wanted: Parking lot cashier**

CITY OF NEW BEDFORD

PARKING LOT CASHIER \$11.72hr (temporary part-time 19hr/wk)

TRAFFIC COMMISSION

Collects parking lot fees and tickets. Performs maintenance

and security of designated area, namely parking lot or parking garage.

Collects fees and tickets. Provides security within garage to limit thefts and vandalism of vehicles occupying garage and garage property. Maintains garage and office to ensure they are kept clean and orderly.

High school graduate or GED equivalent preferred. Familiar with customer service professional interactions. Counts money to verify amounts and issues receipts for funds received. Ability to access, input and retrieve information from a computer.

For application/complete job description, please visit [www.newbedford-ma.gov](http://www.newbedford-ma.gov) or contact Personnel Dept., 133 William St., Room 212, 508-979-1444. Applications will be accepted until a suitable candidate is found. New Bedford has a residency requirement. EEO

---

## **2014 Downtown New Bedford Holiday Stroll (Dec 6-7)**



The Holiday Stroll weekend will kick off with The “Official” Santa and Mrs. Claus arriving at Custom House Square Park by antique fire truck on Saturday at noon. Santa will “stroll” with his admirers to MARE Studios on Center Street, where he will greet his young friends and pose for free, souvenir photos until 4 pm. At 4:30pm, Santa and Mrs. Claus will join the New Bedford High School and All-City Middle School Marching Bands and Color Guard for a parade up William Street

to the Library steps.

At 5pm Mayor Jon Mitchell will welcome all for the City's official Tree Lighting Ceremony. Joined by Elected Officials and Miss New Bedford. A light show and a few new surprises will also delight you!!

Here us a brief description of what there is to do downtown during "The Stroll". Downtown events include: Free photos with Santa at Mare' Studio – craft vendor fairs at the Centre, Craft-O-Rama pop up Gallery, First Unitarian Church, NB Art Museum/ArtWorks!, and in the Whaling Museum lobby. Free children's craft activities at BCC, the NB Art Museum/ArtWorks!, NB Whaling National Historical Park, and both the YMCA and YWCA. Live entertainment in the Whaling Museum Auditorium, Seaman's Bethel and Custom House Square Park. – Shop for unusual gifts, special treats and sales at stores, eateries and galleries throughout the downtown. Also on Saturday, from 2 – 4 pm., The Greater New Bedford Coral Society will provide musical blessings and good cheer. Strolling carolers will be led by music director and resident composer, Gerry Dyck. You might want to join in and sing along as they stroll about the Downtown! Look around and cast your vote f0r your favorites in the "Deck the Windows" contest!

On both Saturday and Sunday Downtown merchants and organizations have so much to offer and see. Here is a listing of where to go when you "Stroll" through Downtown New Bedford. Be sure to visit all the following to see what they have to offer at:

- Ahab's Wife, 761 Purchase St. –unique women's clothing and specialty items.  
Sat. 10 am – 5 pm, Sun. 12 – 4 pm.
- be jeweled, 26 Centre St. – shop at downtown's favorite jewelry store and enjoy Hershey's chocolate kisses as we help you get your Holiday shopping underway!! Sat. 10 am – 7pm, Sun. 12 – 5pm.

- The Bedford Merchant Gift Store, 28 William St. – gifts, jewelry and apparel – join us for hot drinks & cookies and receive a \$10 coupon to be used Jan-Feb.'15. Sat. 10 am –7 pm, Sun. 10 am -5 pm.
- Bristol Community College -800 Purchase Street – “Letters to Santa” an opportunity for children (and adults!) to pen a letter to Kris Kringle. Also, additional children’s activities Saturday only 1 pm – 4 pm
- Cafe Arpeggio, 800 Purchase St. – coffee, sandwiches, ice cream –and more. Saturday only 8 am – 6 pm.
- Carter’s Clothing and Footwear, 55 William St. – men’s work and casual clothing including Carhartt, Levi’s, Woolrich, Columbia, Champion, Reebok, Sperry, Timberland and more. Sat. 8:30 am – 5:30 pm. Sun. 11 am-5 pm.
- Celia’s Boutique, 111 William St. Drop by for goodies and warm beverages while you shop. From business basics to special occasion evening wear. Some featured lines are Frank Lyman, Cartise, Christopher Blue, Elliott Lauren, Damme Inc. & more. Sat. 10 am -5 pm. Sun. 12-4 pm.
- The Centre, 230 Union Street – Visit us for Holiday Shopping with vendors, crafters, a bake sale, festivities and more! Saturday only 9 am – 4 pm
- CRAFT-O-RAMA, Corner of Union and Purchase Streets -30 assorted artists and crafters, visit this annual Holiday Pop-Up-Shop for great goods and holiday sales. Sat. and Sun. 11 am – 6 pm.
- Destination Soup, 149 Union St. – full menu of soups, sandwiches and salads. Free soup samples! Sat. 11:30 am – 9 pm Sunday 11:30 am – 4 pm.
- Duff Gallery, 24 Centre St. -Traditional New England fine art. Exquisite crafts. Distinctive gifts. Holiday Stroll special 10% off prints by Robert Duff. Sat. 10 am – 5 pm. Sun. 12 – 4 pm.
- Dunkin Donuts, 231 Union St. – Come in to warm up with great coffee, hot chocolate, baked goods and sandwiches.

Enjoy a Holiday Stroll special \$.99 medium hot chocolate! Sat. 4 am-9 pm. Sun. 5 am-8 pm.

- First Unitarian Church, 71 Eighth Street (corner of County & Eighth Sts.) -Annual Holiday Fair, handmade crafts, baked goods, music and more. Saturday only 10 am -4 pm.
- Freestone's City Grill, 41 William St. -Great food, family and friends, since 1979! Offering local seafood, hand-cut steaks, hearty salads and sandwiches, award winning chowder, the best burgers in town and a great kids menu!!! Sat. 11:30 am -11pm Sun. 12-9 pm.
- Gallery 65 on William, 65 William St. -featuring fine arts and crafts. Saturday 11 am-5 pm - book signing & trunk show with Sandra Hall Sunday 11 am-4 pm - trunk show with Patricia Poineau (Pet Portraits)
- The Landing, 98 Front St. - Free Landing Port of New Bedford T-shirt with a \$25. Purchase. 15% off all silver jewelry. Every child gets to pick a treasure from the Treasure Trunk! Refreshments and merriment served both days! Sat. 7 am - 10 pm Sun. 8:30 am - 8:30 pm.
- Mare Studios and Gallery, 27 Centre St. - Be photographed with Santa and receive a free 5 x 7 while you wait. Donations accepted on behalf of the Neediest Family Fund or a canned good for a local pantry. Sat. and Sun. 12 - 4 pm.
- Moby Dick Retail Gift Shop, 27 William St. - nautical gifts, jewelry, apparel and accessories - join us for hot drinks & cookies and receive a \$10 coupon to be used Jan-Feb.'15. Sat.10 am - 7pm. Sun 10 am - 5pm.
- Modern Exchange, 185 Union St. - High quality consignment shop featuring new and revived fashions for men, women and children. Sat. 10 am-3 pm. Sun. 11 am to 3 pm.
- New Bedford Art Museum/ArtWorks!, 608 Pleasant St. - Holiday Boutique will be open in our Skylight Gallery both days. On Saturday only, in the lower level we, will have kid's activity from 11-4 where they can

make glitter pine cone Christmas tree ornaments. Sat. and Sun. 12 noon to 5 pm.

- New Bedford Free Public Library steps, 613 Pleasant Street – City’s official Tree Lighting ceremony with Mayor Mitchell, Elected Official, Miss New Bedford and a few new surprises! Saturday beginning about 5 pm.
- New Bedford Whaling Museum, 18 Johnny Cake Hill – Visit the White Whale Gift Shop and a local artisan Vendor Fair in the Jacobs Gallery featuring: ANGELDOR Heavenly Crystal Jewelry -Ava Anderson Non-Toxic – Boston Caricature -Destination Soups – Dorothy Cox Candies - Early Bird Studio – Galleria Gardella – Himalayan Salt Co. – Silverbrook Farms – Soi Dog Foundation – Street Angel Wisdom – Younique Sat. and Sun. 9am – 5pm
- Also Live performances in the Whaling Museum auditorium: Saturday: 1:00 – 2:30 ShowStoppers “A Christmas Cabaret” 3:00 – 4:00 Cheryl McCormack Dancers – Holiday Show.
- New Bedford Whaling National Historical Park, 33 William St. – View the Park film “The City that Lit the World” on the hour and ask at the front desk for your own set of Civil War trading cards. On Saturday only, from 2- 4 pm meet Ruth, one of the Park’s 1850s ladies and make your own Holiday pin to take home. Sat. and Sun. 9 am – 5 pm.
- No Problemo, 813 Purchase St. -Mexican style food, full beer and wine menu and great service with a smile!! Sat. 11 am-10 pm. Sun. 12noon – 8 pm.
- Seaman’s Bethel/New Bedford Port Society, 15 Johnny Cake Hill – Historic Church featured in Moby-Dick is open for tours. On Sunday only from 2 – 4 pm. Members of the NEW BEDFORD SYMPHONY YOUTH ORCHESTRA will perform classical hits and Holiday favorites. This is a great opportunity to sit, relax, and enjoy beautiful music in a historic setting. Sat. and Sun. 12 noon to 4 p.m.
- Tia Maria’s European Café, 42 No. Water St –Join us Saturday from 10 am – 12 noon for two great attractions:

the “Portuguese Kids” pop up shop for all your holiday needs! You will have an opportunity to meet the funny men themselves, have some laughs, shop local and buy a unique, personalized gift such as t-shirts, CDs, key chains, charms and more! Also joining the fun, Maria Lawton, also known as the Azorean Green Bean, will be here for a meet & greet/signing with her best-selling book, Azorean Cooking: From MyFamily Table to Your’s, a collection of more than 50 recipes celebrating the traditions of Azorean cooking, culture, and family. Sunday, we will be serving breakfast until 1PM and will have sweet treats available for anyone wearing their favorite Christmas sweater. Saturday 7:30 am -9:30 pm – Sunday 7:30 am – 1pm

- TL6 the Gallery, 100 William St. – Stop in to try a sample of jellies by Sprig as well as homemade cookies by Just Like Mom’s while shopping our wide selection of handmade gifts and artwork. Saturday only features artist of the month Michael Vincent Bushy doing demonstrations of book binding and showing his works. Sat. 11 am – 6 pm. Sun. 12 – 4 pm.
- Travessia Winery, 760 Purchase St. –our own Urban winery featuring authentic and hand crafted wines On Sunday only from 12 – 5, Shy Brothers Farm will be offering a taste of their hand-made local cheeses. These award winning cheeses will also be available for visitors to purchase along with our own wines. Sat. 12-8 pm. Sun. 12-5pm.
- The University Art Gallery – Star Store, 715 Purchase St. – Annu Palakunnathu Matthew: An Indian from India. Exhibits are free and open to the public. Sat. and Sun. 9 am – 6 pm.
- YMCA – 25 So. Water St – Warm up in our lobby and enjoy hot chocolate and a craft activity-Sat, 11 am – 4 pm Sun. 11 am – 2 pm.
- YWCA of SE Mass. , 20 So. Sixth St. – Craft activity both days that includes decorating pine cones



and snowflakes. Will also have cookies and hot chocolate. Sat. and Sun. 12 noon – 4 pm.

- Antique Fire Truck rides will bring you around the downtown. All this and much more! Free parking!
  - Custom House Square Park – Santa arrives on Saturday at 12 noon by antique fire truck. Also look for periodic visits from some of our animal residents from the Buttonwood Park Zoo. They will be greeting and educating visitors along with our zoo staff with this up close and personal experience. The Holidays are a perfect time to enjoy family and nature. The Buttonwood Park Zoo wishes all a Happy Holiday Season! Saturday and Sunday – periodically between 12 and 4:00 pm. Also visit the display and talk to Reps from New Bedford Energy Now and Next Step Living. Saturday and Sunday – 12 – 4:00 pm.
- 

## **The South Coast Hot Jobs List – 19 November, 2014**

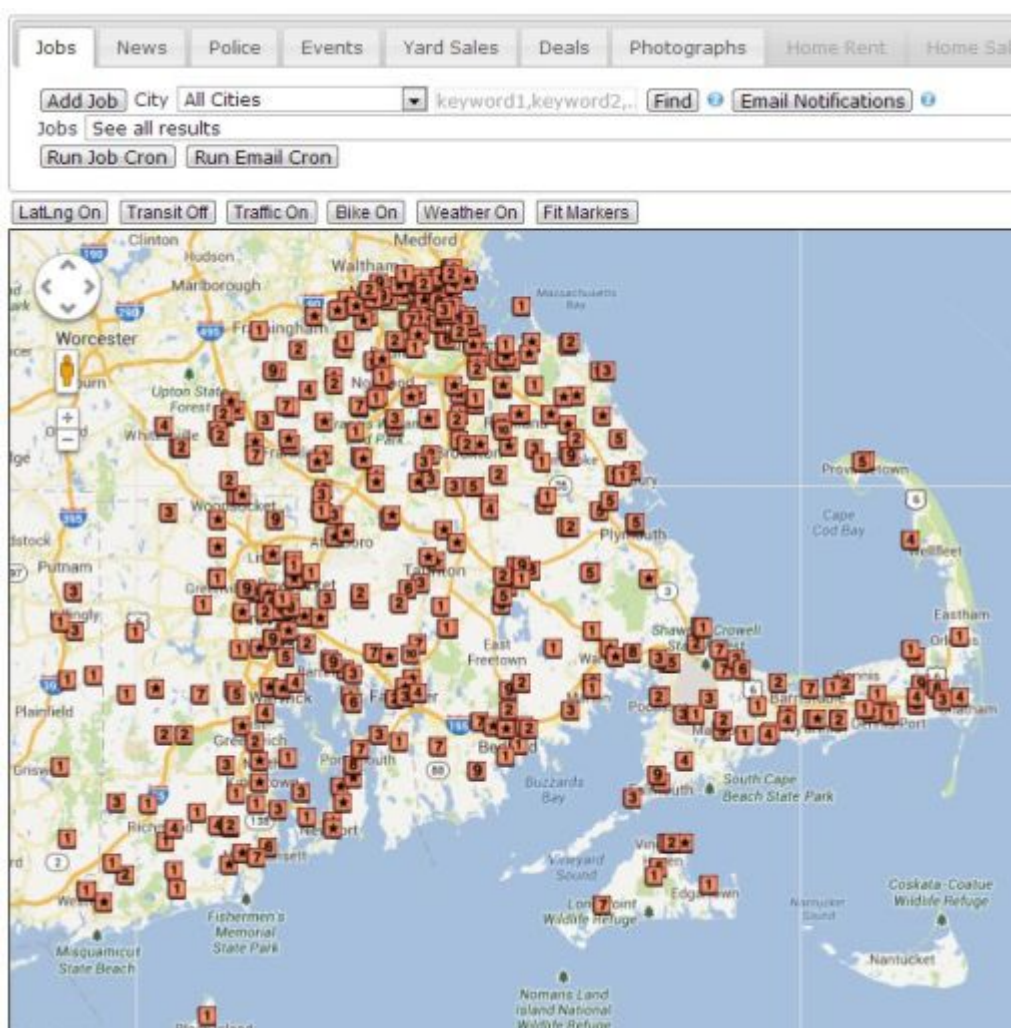


by  
Michael  
Silvia

The Greater New Bedford unemployment rate is much higher than the rest of Massachusetts, but believe it or not there really are a lot of jobs available for qualified applicants. Sometimes the barrier to a new job can be the lack of information on available job openings.

To solve this, each week New Bedford Guide will be working with the New Directions Southcoast (also known as the Greater New Bedford Career Center) and pulling jobs from our **jobs database** to inform job seekers about the hottest jobs in the area.

We will define “Hot Jobs” as those jobs that need to be filled by the employer immediately. For those looking to search some large job databases, checkout my **Best Job Search Resources for New Bedford Residents article**. Unless noted otherwise, those interested in these positions or want more information should go to the Greater New Bedford Career Center at 618 Acushnet Avenue.



Here are the Hot Jobs from the Greater New Bedford Career Center as of November 19th, 2014:

**1. Cashier #4979362 (Part-time Seasonal)**

This position is responsible for assisting in the operation of a department. An individual in this position will be expected to perform additional job related responsibilities and duties throughout the facility as assigned and/or as necessary. Must be available days, weekend and evenings. Walmart – Wareham.

**2. Dry Grocery/GM Stocker #4979366 (Part-time Seasonal)**

This position is responsible for assisting in the operation of a department. An individual in this position will be expected to perform additional job related responsibilities and duties throughout the facility as assigned and/or as necessary. Walmart-Wareham.

**3. Apparel/Home Associate #4979372 (Part-time Seasonal)**

This position is responsible for assisting in the operation of a department. An individual in this position will be expected to perform additional job related responsibilities and duties throughout the facility as assigned and/or as necessary. Walmart-Wareham.

**4. Legal Secretary #4973996**

Law firm seeking full time (40 hours a week) Portuguese speaking (Spanish speaking a plus) Legal Secretary. Experience in Family Law and Immigration Law preferred. Must be highly motivated, able to multi-task, work well under pressure and have excellent telephone and organizational skills. Must have at least 2 years experience.

**5. Office Administration #4983005**

Need Bachelors Degree or equivalent work in an insurance sales office.

**6. Outreach Manager #4983009**

The SouthCoast Energy Challenge is seeking a Lead Community Organizer who will be to plan and oversee Energy Challenge direct and indirect community outreach, develop and coordinate a volunteer base, and manage the organizing interns. Tasks

include, but are not limited to: Recruitment and supervision of outreach and organizing volunteers & student interns; Ability to work with a diverse group of stakeholders in a fast-paced environment; A willingness to understand energy and sustainability-related issues is essential; Must have own personal transportation and be willing to travel up to 80 miles a day.

### **7. Estimator #4983687**

Looking for an experienced estimator with a background in architectural drafting. This is a masonry company, but if you have done estimating for a concrete company, sheet metal company or in the world of construction and know how to read architectural plans, employer will train the right candidate.

---

Here are the Hot Jobs in the New Bedford area from the **NewBedfordGuide.com jobs database**, as of November 19th, 2014:

#### **1. Service Desk Associate – Kmart (Fairhaven)**

Full details and application process [here](#).

#### **2. Cook – Papa Gino's (Fairhaven)**

Full details and application process [here](#).

#### **3. Branch Customer Service Representative – Webster Bank (New Bedford)**

Full details and application process [here](#).

#### **4. Housekeeper – Child & Family Services**

Full details and application process [here](#).

#### **5. Inventory Taker – 7-Eleven (N.B. and beyond)**

Full details and application process [here](#).

#### **6. Laborer – Track Services/Youngstown**

Full details and application process [here](#).

#### **7. Retail Store Manager – CVS Health (New Bedford)**

Full details and application process [here](#).

---

Be sure to also check out our Job Portal to find jobs by location on a map: [newbedfordguide.com/map-page#pm\\_jobs\\_tab](http://newbedfordguide.com/map-page#pm_jobs_tab). Want to get e-mail notifications for new jobs? Checkout our [e-mail subscription service](#).

---

---

## **66 year old New Bedford man robbed by two men**

UPDATE: New Bedford police arrested two teenagers in connection with this robbery.

Police report that a 14-year-old male was arrested at the Whaling City Alternative School Wednesday afternoon in connection with the robbery and a 16-year-old accomplice was arrested at his home later that evening. Both have been charged with unarmed robbery of a person over 60 years of age. The suspects were arraigned in New Bedford Juvenile Court on Thursday.

On Sunday afternoon, November 16th, 2014, at approximately 12:45pm a 66 year old New Bedford man was robbed as he was walking home. He was not injured.

The victim was walking home in the area of County and Rivet St. when he was grabbed from behind in a bear hug. The suspect reached into his pockets and took some cash.

The suspect and a second male who was with him, were last seen

running northerly on Purchase St. from Rivet St.

The victim could only describe the suspects as light skinned males with slim builds. They were both between 5-7 and 5-10 in height and wearing light colored clothing.

Neither suspect spoke to the victim during the robbery.

Anyone with information is asked to contact Det. William Westgate at 508-991-6300 ext. 136.

Post by City of New Bedford Police Department (Official).

---

# Help Wanted: Deputy Building Inspector

CITY OF NEW BEDFORD

DEPUTY INSPECTOR OF BUILDINGS \$57,596 – \$70,255

DEPARTMENT OF INSPECTIONAL SERVICES

Performs a variety of routine and complex administrative, supervisory and technical work in administering and enforcing building and related codes. Ensures and enforces that State and City building and zoning codes are being maintained in order to ensure public safety.

Reviews plans and permits, and makes necessary corrections. In the interest of public safety or in case of danger, the Deputy Inspector of Buildings may temporarily cease work, and/or close sidewalks or streets adjacent to said building.

Provides technical building code advice to supervisors; makes presentations to supervisors, boards, commissions, civic groups and the general public. Enforces a variety of codes,

including Uniform Building Code, Uniform Mechanical Code, Uniform Housing Code, Uniform Abatement of Dangerous Buildings Code, and local codes such as nuisance, clearing, grading, filling, zoning, etc. Issues correction notices and citations. Explains, interprets and provides guidance regarding all applicable codes to architects, engineers, contractors, developers and other interested parties.

Administers the permitting function through the View Permit Program, including application, fee assessment and collection, permit issuance, inspection and occupancy.

The position requires seven to ten years of construction and supervisory experience, supervision of building construction or design; or a four-year undergraduate degree in a field related to building construction or design; or any equivalent combination of education and experience.

Duties require a thorough knowledge of materials and methods used in building construction and building, electric, gas, plumbing and sanitary codes, zoning by-laws and planning, conservation and historic matters equivalent to a Bachelor's degree in Engineering.

Certification by the MA Board of Building Regulations and Standards in accordance with the provisions of 780 CMR 7. One or more I.C.C. certifications, including, but not limited to, plans examiner, combination inspector, or local building inspector. Possession of a valid Massachusetts driver's license with good driving record. Subject to CORI (Criminal Offender Record Investigation) background check.

For application/complete job description, please visit [www.newbedford-ma.gov](http://www.newbedford-ma.gov) or contact Personnel Dept., 133 William St., Room 212, 508-979-1444. Applications will be accepted until a suitable candidate is found. New Bedford has a residency requirement. EEO



---

# Help Wanted: Library Assistant

CITY OF NEW BEDFORD

LIBRARY ASSISTANT I (temporary) \$10.68hr 12 hours per week

NEW BEDFORD FREE PUBLIC LIBRARY

Assists in the daily operations of the Circulation Desk, monitors the borrowing of materials and performs related public service duties as required. Must be available some nights and Saturdays.

Provides courteous public service at the circulation desk by responding promptly to patron requests according to established procedures. Promotes library service to the community by assisting in the planning and implementation of library programs. Makes the library collection accessible by following established circulation and cataloging procedures.

Contributes to the smooth operation of daily functions by completing assigned projects without ongoing supervision, and observing all policies as outlined in the staff and circulation manuals.

Strives to maintain harmonious working relationships by collaborating with co-workers, using courteous language and avoiding discussion of personal or staff issues in public areas.

This position performs a variety of clerical duties, which include: assistance in opening and closing department; typing and filing; assisting in maintaining appropriate security on ground floor when reporting inappropriate patrons' behavior to Librarian. May assist in collecting, recording and

transferring all monies (cash or checks, in person or by mail) coming in, ordering supplies and calling repair services when necessary.

Prepares and checks materials being loaned; checks in materials and packs materials to be sent via the carriers. Distributes mail to appropriate departments.

High school diploma or GED required. Two years of college or appropriate public library experience with an automated library system preferred. Individual must possess working knowledge of library principles, methods and procedures; good communication skills with the ability to deal tactfully with others; attentive to detail, good judgment, good physical condition, ability to type at least twenty words per minute. Contributes to the smooth operation of daily functions by completing assigned projects without ongoing supervision. Establishes and maintains harmonious working relationships with others. Ability to speak Spanish desirable.

For more information, please visit [www.newbedford-ma.gov](http://www.newbedford-ma.gov) or contact the Personnel Dept., 133 William St., Room 212, 508-979-1444. Resumes are only accepted with a completed employment application. Applications will be accepted until a suitable candidate is found. New Bedford has a residency requirement. EEO