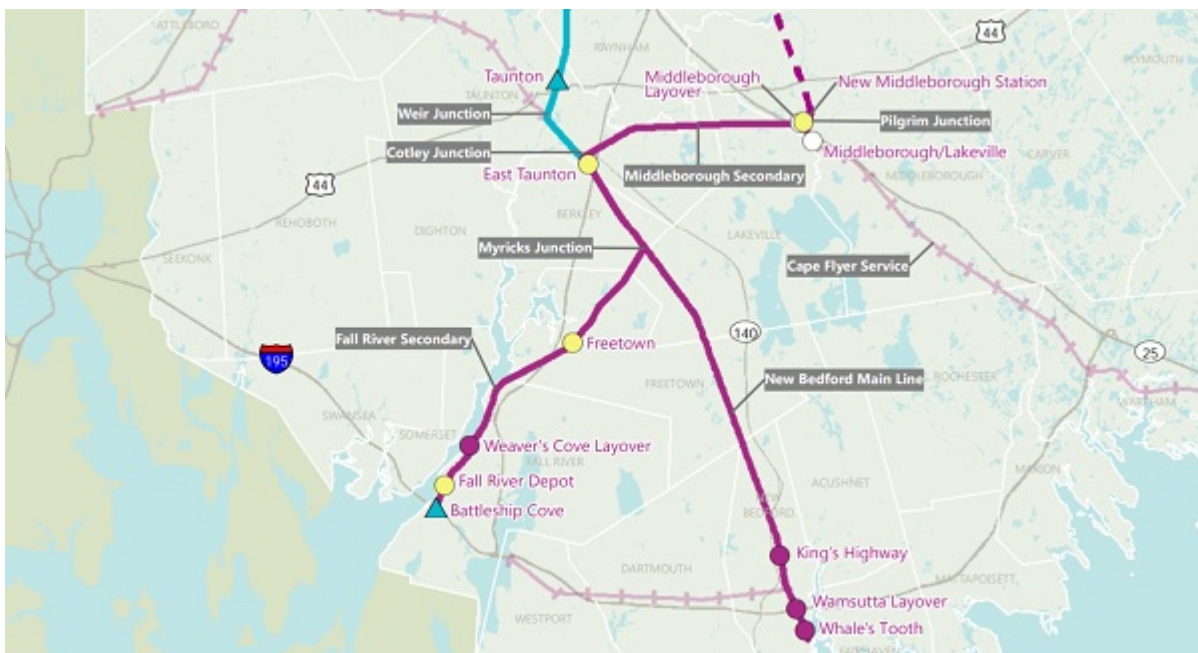


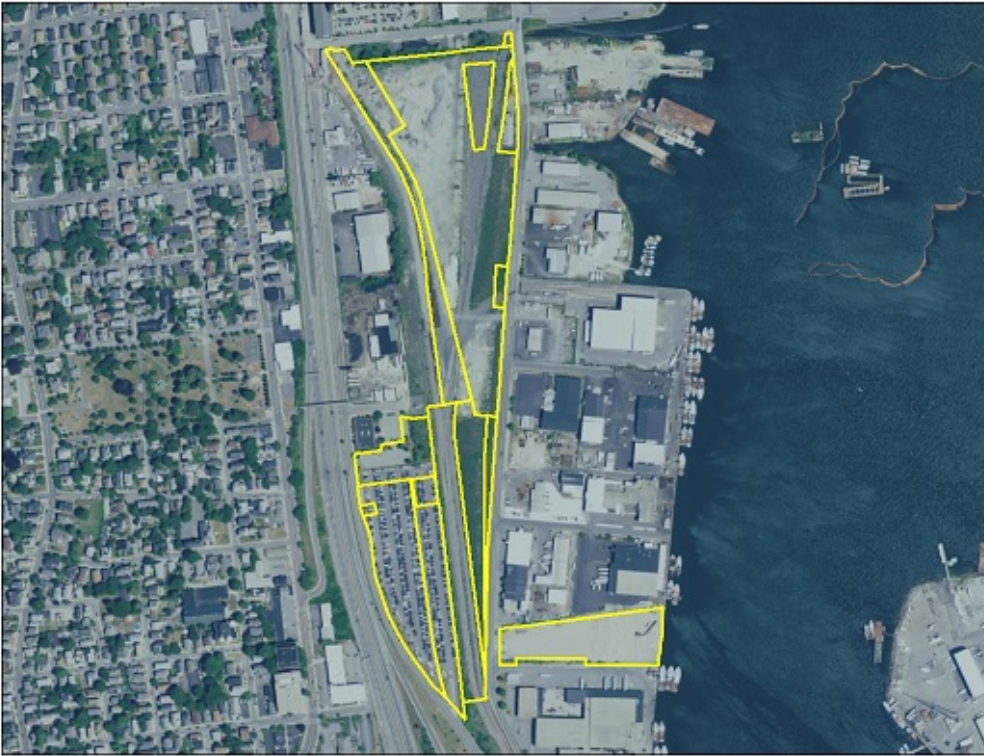
10 Things to Know About South Coast Rail

Massachusetts Transportation Secretary Stephanie Pollack recently visited UMASS Dartmouth School of Law to inform the public on the latest with South Coast Rail and its service for residents of the region. Here are 10 important takeaways from the South Coast Rail Draft Supplemental Environmental Impact Report:

1. Rail service to Boston from Fall River and New Bedford will start in 2022 and is known as Phase 1. Phase 1 will provide commuter rail service by extending service from the Middleborough/Lakeville Line to New Bedford, Fall River and Taunton using existing freight rail corridors. The Full Build will be completed around 2030.



2. For phase 1, New Bedford will have two stations and one layover; King's Highway Station, Wamsutta Layover, and Whale's Tooth Station. Total time from New Bedford to Boston is estimated at 63 minutes.



Whale's Tooth Station in New Bedford.

3. For phase 1, Fall River will have the Weaver's Cove layover and the Fall River Depot Station. Battleship Cove Station will come during the Full Build. There will also be a station in Freetown during Phase 1. Total time from Fall River to Boston is estimated at 51 minutes.

4. MassDOT selected the Middleborough route for Phase 1 (as opposed to the Stoughton Route) service because it will support earlier commuter rail service to Fall River and New Bedford.

5. The Stoughton Route, as part of the Full Build, will come around 2030.

6. Element 1 of Phase 1 includes 6 round-trip trains for Fall River and 7 round-trip trains for New Bedford each day. Trains will arrive/leave the stations every 90 minutes during the operation window.

7. Phase 1 service will provide riders with 7 million trips over 8 years before the final build is complete.

8. The total cost of South Coast Rail Phase 1 is estimated at \$935 million. The total cost of the Full Build is estimated at \$3.2 billion (Phase 1 cost included).

Table 2-8 Phase 1 Capital Cost Summary

Item	Capital Cost
Total Infrastructure Cost ¹	\$ 466,787,000
Real Estate Cost	\$ 21,490,000
Professional Services Cost ²	\$ 127,825,000
Contingency and Escalation ^{3, 4}	\$ 205,573,000
Coach Costs ⁵	\$ 71,605,000
Force Account and Agency	\$ 41,472,000
Total	\$ 934,752,000

9. Phase 1 will reduce greenhouse gas emissions by 7,121 short tons per year (6,460 metric tons)

10. You can check for updates and public meetings regarding South Coast Rail at <http://www.massdot.state.ma.us/southcoastrail/Home.aspx>